

# **HERKIMER CENTRAL SCHOOL DISTRICT**

## **Budget Hearing**

Tuesday, May 7, 2024, 6pm  
High School Media Center

## **Annual Board/Budget Vote**

Tuesday, May 21, 2024, Noon-8pm  
High School Media Center

# **2024 – 2025 PROPOSED BUDGET STATEMENT**

## **Board of Education**

Brian Crandall, President  
Michele Gilbert, Vice-President  
Diann Fischer  
Joseph Lamanna  
Robert Mihevc  
Scott Petucci  
Aleksander Verenich

Kathleen Carney, Superintendent of Schools  
Chad Hess, School Business Official



# HERKIMER CENTRAL SCHOOL DISTRICT

## VOTE

May 21, 2024 – Noon-8 p.m.  
Jr./Sr. High School  
Library Media Center

Proposed Budget: \$33,932,756

### Learn More – Budget Hearing

May 7, 2024 – 6 p.m.  
Jr./Sr. High School Library Media Center

## 2024-25 BUDGET NEWSLETTER

# Proposed 2024-25 school budget maintains programs and staff

Herkimer Central School District voters will go to the polls on Tuesday, May 21, to decide on a proposed \$33,932,756 budget for the 2024-25 school year that remains under the district's tax levy limit while maintaining all programs and staff.

"Providing the best opportunities, programs and electives for our students to learn and thrive along with a safe environment is always our top priority with any school budget proposal," Herkimer Superintendent Kathleen Carney said. "We also are very aware of the need to limit tax increases for our community, so we're pleased to once again offer a budget that's under our levy limit."

The proposed budget would be a 3.53% increase from the 2023-24 spending plan. It includes a tax levy increase of 1.75%, which is below Herkimer's tax levy limit of 3.27%, as calculated using the state's formula. The district has been under the levy limit for 13 of the 14 years since the limit's inception in 2012-13, and the one year over the limit was a 0% increase.

The budget includes additional speech services at the Elementary School and instructional support at the Jr./Sr. High School through adding a licensed teaching assistant and academic support teacher. The district will continue to seek qualified teachers to fill vacant positions including special education teachers.

Voters will also elect one Board of Education member, decide whether to authorize a capital reserve fund of up to \$5 million over 10 years (see page 2 for more) and vote on the public library budget and library Board of Trustees.



Q&A  
PAGE 2

DETAILS  
PAGES 2-3

VOTING  
PAGE 4

### Proposed 2024-25 budget at a glance:

- ▶ Maintains **student programs and services**.
- ▶ Is a **3.53% increase** from the 2023-24 budget.
- ▶ Carries a **1.75% tax levy increase**, which is under the calculated levy limit. The district has been under the levy limit for 13 of the 14 years since its inception.

### Highlights included in the proposed 2024-25 budget:

#### Districtwide highlights:

##### Technology:

- ▶ Fully fund phase one of a five-year replacement plan for classroom technology
- ▶ Upgrade network infrastructure and access points

##### Programs:

- ▶ Maintain Connected Community School program established in 2023-24
- ▶ Sustain enrichment opportunities and mental health services

##### Athletics:

- ▶ Provide additional interscholastic opportunities, including wrestling and boys tennis

##### Support services:

- ▶ Proceed with year four of five-year transportation contract
- ▶ Continue free breakfast and lunch through Community Eligibility Provision
- ▶ Replace utility vehicle (UTV) for grounds maintenance

##### Safety:

- ▶ Upgrade and replace security cameras

##### Other:

- ▶ Make electrical and general repairs at Harmon Field
- ▶ Replace aging classroom furniture

##### Elementary highlights:

- ▶ Maintain all existing staff and programs
- ▶ Sustain smaller class sizes
- ▶ Increase contracted speech services
- ▶ Continue R4K (Ready 4 Kindergarten) program at prekindergarten level

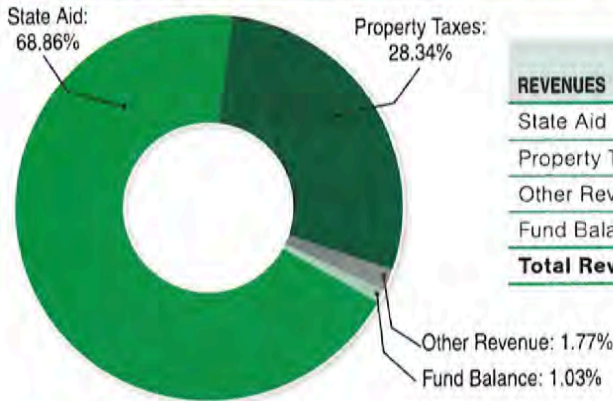
##### Secondary highlights:

- ▶ Sustain enrichment opportunities, social emotional supports and academic programming
- ▶ Add a full-time licensed teaching assistant for instructional support
- ▶ Expand academic support program
- ▶ Continue off-campus programming including CTE, VP-TECH and Project Lead the Way



# Projected Revenues

The district's plan for how it will obtain every dollar in the proposed budget:



REVENUES	2023-24 BUDGETED	2024-25 PROPOSED	\$ CHANGE '23-'24 TO '24-'25	% CHANGE '23-'24 TO '24-'25
State Aid	\$22,808,874	\$23,366,364	\$557,490	2.44%
Property Taxes	\$9,451,000	\$9,616,392	\$165,392	1.75%
Other Revenue	\$516,669	\$600,000	\$83,331	16.13%
Fund Balance	\$0	\$350,000	\$350,000	NA
<b>Total Revenues</b>	<b>\$32,776,543</b>	<b>\$33,932,756</b>	<b>\$1,156,213</b>	<b>3.53%</b>

## Proposed capital reserve fund

During the school budget vote, residents will also vote on whether to authorize the district to create a capital reserve fund of up to \$5 million over 10 years.

Capital reserve funds established and utilized through voter approval are used to maintain the district's buildings and grounds. The district has used these types of reserves for the last several projects.

In January 2024, voters approved the use of \$5 million from the capital reserves established in 2017 and 2022 for Capital Project 2024, which is currently in the design phase.

The district is proposing the establishment of the new 2024 capital reserve to help fund future capital improvements.

The proposed capital reserve would be funded annually with unallocated fund balance and other reserves as determined by the Board of Education.



## Budget Q&A?

### What am I voting on?

On May 21, 2024, Herkimer Central School District voters will decide on the district's \$33,932,756 proposed budget for the 2024-25 school year.

Residents will also elect one Board of Education member, decide whether to authorize a capital reserve fund of up to \$5 million over 10 years and vote on the public library budget and library Board of Trustees.

### What is included in the proposed budget?

In addition to maintaining existing programs and services, the proposed budget includes highlights in the areas of safety, programs, support services, technology, hiring for unfilled positions, adding a full-time licensed teaching assistant and more. See "Highlights included in the proposed 2024-25 budget" on page 1 for more information.

### What capital improvements are planned in the 2024-25 budget?

There is \$450,000 budgeted in the transfer to capital line of the proposed budget, and there are two phases of work planned for these funds.

First, the district would utilize \$100,000 to replace aging flooring and do other related work in the Jr./Sr. High School. The district has traditionally completed these \$100,000 projects to address health, safety and technology needs in our school buildings. These projects are authorized by the state to receive building aid in the following year, unlike traditional capital projects, which are reimbursed over time.

The remaining \$350,000 is a one-time appropriation to address minor sitework and infrastructure needs at the newly acquired Harmon Field and Harmon Park, to provide improved storage for maintenance equipment and to complete other related work.

This funding will come directly from fund balance and will receive building aid over the traditional 15-20 years depending on how it is classified by the state. The district currently receives reimbursement of approximately 83% for approved capital expenditures.

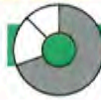
### What happens if the budget is voted down?

If the proposed budget is defeated on May 21, the Board of Education can put the same or a revised budget up for a vote in June, or it can immediately adopt a contingent budget. After two unsuccessful budget votes, Herkimer would have to adopt a contingent budget. State law mandates that under a contingent budget, a school district must adopt a budget with no tax levy increase and eliminate all non-contingent expenses, such as certain student supplies, certain equipment purchases and community use of school facilities that results in a district expense. In other words, the district would likely need to make budget cuts to decrease spending.

**BUDGET HEARING** • May 7, 2024 – 6 p.m. • Herkimer Jr./Sr. High School Library Media Center

# Proposed Expenditures

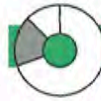
The district's plan for how money will be spent within the proposed budget:



## Program \$23,605,852 | 69.57%

Includes expenses for curriculum development, instructional programs, supplies, district transportation, athletic programs, community services, most employee benefits and transfers of funds.

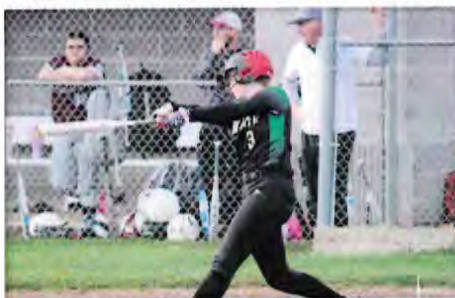
EXPENDITURES	2023-24 BUDGETED	2024-25 PROPOSED	\$ CHANGE '23-'24 TO '24-'25	% CHANGE '23-'24 TO '24-'25
<b>Subtotal</b>	<b>\$22,736,304</b>	<b>\$23,605,852</b>	<b>\$869,548</b>	<b>3.82%</b>



## Capital \$6,132,014 | 18.07%

Includes expenses for plant operations, maintenance, debt service principal and interest on all building projects and some employee benefits.

EXPENDITURES	2023-24 BUDGETED	2024-25 PROPOSED	\$ CHANGE '23-'24 TO '24-'25	% CHANGE '23-'24 TO '24-'25
<b>Subtotal</b>	<b>\$5,569,486</b>	<b>\$6,132,014</b>	<b>\$562,528</b>	<b>10.10%</b>



## Administrative \$4,194,890 | 12.36%

Includes expenses for Board of Education, central administration, financial and legal services, personnel, supervision of regular school, BOCES administrative expenses including a BOCES capital project and administrative employee benefits.

EXPENDITURES	2023-24 BUDGETED	2024-25 PROPOSED	\$ CHANGE '23-'24 TO '24-'25	% CHANGE '23-'24 TO '24-'25
<b>Subtotal</b>	<b>\$4,470,753</b>	<b>\$4,194,890</b>	<b>-\$275,863</b>	<b>-6.17%</b>

	2023-24 BUDGETED	2024-25 PROPOSED	\$ CHANGE	% CHANGE
<b>Total Expenditures</b>	<b>\$32,776,543</b>	<b>\$33,932,756</b>	<b>\$1,156,213</b>	<b>3.53%</b>

CATEGORY	2023-24 APPROVED BUDGET	% OF TOTAL	2024-25 PROPOSED BUDGET	% OF TOTAL	% CHANGE
Payroll	\$9,913,465	30.25%	\$10,094,356	29.75%	1.82%
Benefits	\$6,322,617	19.29%	\$6,669,923	19.66%	5.49%
BOCES	\$8,261,946	25.21%	\$8,117,315	23.92%	-1.75%
Contractual	\$3,836,672	11.71%	\$3,938,470	11.61%	2.65%
Debt service	\$3,375,713	10.30%	\$3,494,192	10.30%	3.51%
Supplies	\$441,000	1.35%	\$452,500	1.33%	2.61%
Equipment	\$443,130	1.35%	\$631,000	1.86%	42.40%
Transfer to capital	\$100,000	0.31%	\$450,000	1.33%	350.00%
Textbooks	\$82,000	0.25%	\$85,000	0.25%	3.66%
<b>TOTAL</b>	<b>\$32,776,543</b>	<b>100%</b>	<b>\$33,932,756</b>	<b>100%</b>	<b>3.53%</b>



**HERKIMER CENTRAL SCHOOL DISTRICT**

801 West German Street  
Herkimer, NY 13350

Bulk Rate  
Non-Profit Org.  
US POSTAGE  
PAID  
Permit #37  
Herkimer, NY  
13350

**Board of Education**

- Brian Crandall, **President**
- Michele Gilbert, **Vice President**
- Diann Fischer
- Joseph Lamanna
- Robert Mihevc
- Scott Petucci
- Aleksander Verenich

**Superintendent**

Kathleen Carney

**School Business Manager**

Chad Hess

*Produced in cooperation with the Capital  
Region BOCES Communications Service.*

**2024-25 BUDGET NEWSLETTER**

# Voting Information

**Who can vote?**

In order to vote, a person must be at least 18 years old, a United States citizen and a resident of the Herkimer Central School District for at least 30 days prior to the May 21, 2024, vote. Voter registration is not required.

**When and where is the vote?**

The school budget vote will take place from noon to 8 p.m. on Tuesday, May 21, in the Herkimer Jr./Sr. High School Library Media Center.

**Can I vote early or vote by absentee ballot?**

Absentee ballot voting is available, and the new Early Mail Voter Act effective Jan. 1, 2024, allows for early voting via mail with no reasons needed. You must fill out an application to vote by early voting or absentee ballot. There are separate applications for voting by early voting or absentee ballot, but the application process and deadlines are the same for both.

To obtain an application or for more information, call the district office at 315-866-2230, ext. 1304. If you would like a ballot mailed to you, your

application must be received by 5 p.m. on May 14, 2024. If you plan to pick up your ballot, your

application must be received by 5 p.m. on May 20, 2024. The completed ballot must be received by 5 p.m. on May 21, 2024.

**What exactly am I voting on?**

- **Vote on the school budget:** School district residents are voting on a proposed \$33,932,756 budget for the 2024-25 school year. The budget calls for a 3.53% spending increase and a 1.75% tax levy increase.
- **Vote on creating a capital reserve fund:** School district residents will vote on whether to authorize the district to create a capital reserve fund of up to \$5 million over 10 years. For more information, see page 2.
- **Elect one Board of Education member:** One seat is up for election on the Herkimer Board of Education. It carries a three-year term. Incumbent Michele Gilbert is running unopposed for re-election to the seat.
- **Vote on library budget/trustees:** School district residents will decide on the Frank J. Basloe Public Library's proposed tax levy of \$360,921 to fund the library's annual budget.



*Herkimer earth science students viewing the eclipse in Boonville.*

*Follow us on Facebook, X and Instagram: @herkimercsd*

Residents will also vote on one library Board of Trustees seat, which has a five-year term.

**How can I learn more?**

A budget hearing will be held at 6 p.m. Tuesday, May 7, in the Herkimer Jr./Sr. High School Library Media Center. More budget details are also available online at [www.herkimercsd.org](http://www.herkimercsd.org).

 **VOTE**  
 May 21, 2024 – Noon-8 p.m.  
 Herkimer Jr./Sr. High School  
 Library Media Center

**HERKIMER CENTRAL SCHOOL DISTRICT  
2024-2025 PROPOSED BUDGET  
ADOPTED BY BOE ON 4/17/2024**



General Fund Appropriations by Program					
	2023-2024 Current	2024-2025 Proposed	(Decrease) Increase	% Change	% of Total
Admin	\$ 4,470,753	\$ 4,194,890	\$ (275,863)	-6.17%	12.36%
Program	\$ 22,736,304	\$ 23,605,852	\$ 869,548	3.82%	69.57%
Capital	\$ 5,569,486	\$ 6,132,014	\$ 562,528	10.10%	18.07%
<b>Total</b>	<b>\$ 32,776,543</b>	<b>\$ 33,932,756</b>	<b>\$ 1,156,213</b>	<b>3.53%</b>	<b>100%</b>

General Fund Appropriations by Type					
Description	2023-2024 Current	2024-2025 Proposed	(Decrease) Increase	% Change	% of Total
Payroll	\$ 9,913,465	\$ 10,094,356	\$ 180,891	1.82%	29.75%
Benefits	\$ 6,322,617	\$ 6,669,923	\$ 347,306	5.49%	19.66%
Debt Service	\$ 3,375,713	\$ 3,494,192	\$ 118,479	3.51%	10.30%
BOCES Services	\$ 8,261,946	\$ 8,117,315	\$ (144,631)	-1.75%	23.92%
Equipment	\$ 443,130	\$ 631,000	\$ 187,870	42.40%	1.86%
Contractual	\$ 3,836,672	\$ 3,938,470	\$ 101,798	2.65%	11.61%
Supplies	\$ 441,000	\$ 452,500	\$ 11,500	2.61%	1.33%
Textbooks	\$ 82,000	\$ 85,000	\$ 3,000	3.66%	0.25%
Transfer to Capital	\$ 100,000	\$ 450,000	\$ 350,000	350.00%	1.33%
<b>TOTAL</b>	<b>\$ 32,776,543</b>	<b>\$ 33,932,756</b>	<b>\$ 1,156,213</b>	<b>3.53%</b>	<b>100.00%</b>

General Fund Revenues					
SOURCE	2023-2024 Current	2024-2025 Proposed	(Decrease) Increase	% Change	% of Total
Property Tax	\$ 9,451,000	\$ 9,616,392	\$ 165,392	1.75%	28.34%
State Aid	\$ 22,808,874	\$ 23,366,364	\$ 557,490	2.44%	68.86%
Other	\$ 516,669	\$ 600,000	\$ 83,331	16.13%	1.77%
Fund Balance	\$ -	\$ 350,000	\$ 350,000	N/A	1.03%
<b>TOTAL</b>	<b>\$ 32,776,543</b>	<b>\$ 33,932,756</b>	<b>\$ 1,156,213</b>	<b>3.53%</b>	<b>100.00%</b>

Estimated True Tax Rate	\$ 18.71	\$ 19.04
-------------------------	----------	----------

The Bottom Line
Budget Change = 3.53%
Property Tax Change = 1.75%
Calculated Tax Levy Limit = 3.27%

## Administration

The administrative budget includes those expenses directly related to the functioning of the Superintendent's Office, Business Office, attorneys, auditors, BOCES Administration & Capital Charges, Supervision, Training, and the Board of Education and District Clerk.

Description	2023-2024 Current	2024-2025 Proposed	(Decrease) Increase	% Change	% of Total
Board of Education	\$ 42,787	\$ 43,725	\$ 938	2.19%	1.04%
Central Administration	\$ 227,274	\$ 235,949	\$ 8,675	3.82%	5.62%
Finance	\$ 344,562	\$ 353,887	\$ 9,325	2.71%	8.44%
Personnel & Legal	\$ 122,097	\$ 125,390	\$ 3,293	2.70%	2.99%
Central Services (Data)	\$ 51,657	\$ 52,415	\$ 758	1.47%	1.25%
Special Items/BOCES Capital	\$ 2,421,890	\$ 2,072,339	\$ (349,551)	-14.43%	49.40%
Supervision & Training	\$ 843,991	\$ 872,201	\$ 28,210	3.34%	20.79%
Employee Benefits	\$ 416,495	\$ 438,986	\$ 22,491	5.40%	10.46%
<b>TOTAL</b>	<b>\$ 4,470,753</b>	<b>\$ 4,194,890</b>	<b>\$ (275,863)</b>	<b>-6.17%</b>	<b>100.00%</b>

## Program

The program budget includes those expenses directly related to the teaching of students. Those include teachers, instructional aides and other professional salaries, BOCES Charges, supplies, textbooks, special education costs, health and guidance services, co-curricular activities, and interscholastic athletics. The program area also includes transportation expenses.

Description	2023-2024 Current	2024-2025 Proposed	(Decrease) Increase	% Change	% of Total
Inservice Training	\$ -	\$ -	\$ -	N/A	0.00%
Teaching Regular School	\$ 7,410,664	\$ 7,609,277	\$ 198,613	2.68%	32.23%
Students with Disabilities	\$ 5,062,680	\$ 5,217,579	\$ 154,899	3.06%	22.10%
Occupational Education	\$ 595,475	\$ 616,317	\$ 20,842	3.50%	2.61%
Teaching Special Schools	\$ 130,189	\$ 134,606	\$ 4,417	3.39%	0.57%
Instructional Media	\$ 1,091,211	\$ 1,187,174	\$ 95,963	8.79%	5.03%
Pupil Services	\$ 1,105,442	\$ 1,139,662	\$ 34,220	3.10%	4.83%
Pupil Transportation	\$ 1,892,110	\$ 1,958,949	\$ 66,839	3.53%	8.30%
Interfund Transfers	\$ 25,000	\$ 20,000	\$ (5,000)	-20.00%	0.08%
Employee Benefits	\$ 5,423,533	\$ 5,722,289	\$ 298,756	5.51%	24.24%
<b>TOTAL</b>	<b>\$ 22,736,304</b>	<b>\$ 23,605,852</b>	<b>\$ 869,548</b>	<b>3.82%</b>	<b>100.00%</b>

## Capital

The capital budget includes Operations and Maintenance expenses including salaries, fringe benefits, utilities, and supplies directly related to the cleaning, janitorial services and maintenance of the District's building and grounds. Also in this section of the budget are principal and interest costs related to the borrowing for our capital improvement projects. To offset a portion of this expense the district receives Building Aid from the State of New York. The final piece of this budget is a transfer to capital for ongoing building improvements.

Description	2023-2024 Current	2024-2025 Proposed	(Decrease) Increase	% Change	% of Total
Operations & Maintenance	\$ 1,584,184	\$ 1,652,174	\$ 67,990	4.29%	26.94%
Special Items	\$ 27,000	\$ 27,000	\$ -	0.00%	0.44%
Bonds	\$ 3,375,713	\$ 3,494,192	\$ 118,479	3.51%	56.98%
Transfer to Capital	\$ 100,000	\$ 450,000	\$ 350,000	350.00%	7.34%
Employee Benefits	\$ 482,589	\$ 508,649	\$ 26,060	5.40%	8.29%
<b>TOTAL</b>	<b>\$ 5,569,486</b>	<b>\$ 6,132,014</b>	<b>\$ 562,528</b>	<b>10.10%</b>	<b>100.00%</b>



Account	Description	2024 - 25 Proposed Budget	2023 - 24 Budget	Dollar Change	Percent Change	2023 - 24 Expenditures	2022 - 23 Budget	2022 - 23 Expenditures
A 1010.400-D	BOE CONTRACTUAL/DW	6,000.00	6,000.00	0.00	0.000%	142.10	6,000.00	
A 1010.450-D	BOE SUPPLIES DW	2,000.00	2,000.00	0.00	0.000%	1,671.80	2,000.00	837.93
A 1010.490-D	BOCES BOE DW	11,164.55	10,787.00	377.55	3.500%	9,382.24	11,000.00	11,615.80
<b>1010</b>	<b>BOARD OF EDUCATION *</b>	<b>19,164.55</b>	<b>18,787.00</b>	<b>377.55</b>	<b>2.010%</b>	<b>11,196.14</b>	<b>19,000.00</b>	<b>12,453.73</b>
A 1040.160-D	DISTRICT CLERK NON INST SALARY DW	15,525.00	15,000.00	525.00	3.500%	4,297.21	15,000.00	8,314.59
A 1040.400-D	DISTRICT CLERK CONTRACTUAL/DW	5,000.00	5,000.00	0.00	0.000%	2,891.40	5,000.00	5,494.53
A 1040.450-D	DISTRICT CLERK SUPPLIES DW	1,000.00	1,000.00	0.00	0.000%	855.74	1,000.00	552.00
<b>1040</b>	<b>DISTRICT CLERK *</b>	<b>21,525.00</b>	<b>21,000.00</b>	<b>525.00</b>	<b>2.500%</b>	<b>8,044.35</b>	<b>21,000.00</b>	<b>14,361.12</b>
A 1060.160-D	DISTRICT MEETINGS NON INST SALARY DW	1,035.00	1,000.00	35.00	3.500%		1,000.00	306.12
A 1060.400-D	DISTRICT MEETINGS CONTRACTUAL/DW	1,000.00	1,000.00	0.00	0.000%		1,000.00	952.50
A 1060.450-D	DISTRICT MEETING SUPPLIES DW	1,000.00	1,000.00	0.00	0.000%	596.25	1,000.00	782.62
<b>1060</b>	<b>DISTRICT MEETING *</b>	<b>3,035.00</b>	<b>3,000.00</b>	<b>35.00</b>	<b>1.167%</b>	<b>596.25</b>	<b>3,000.00</b>	<b>2,041.24</b>
<b>10</b>	<b>**</b>	<b>43,724.55</b>	<b>42,787.00</b>	<b>937.55</b>	<b>2.191%</b>	<b>19,836.74</b>	<b>43,000.00</b>	<b>28,856.09</b>
A 1240.150-D	CHIEF SCHOOL ADMIN INST SALARY DW	175,536.00	169,600.00	5,936.00	3.500%	149,003.85	140,000.00	169,527.47
A 1240.160-D	CHIEF SCHOOL ADMIN NON INST SAL DW	51,412.59	49,674.00	1,738.59	3.500%	20,560.67	50,000.00	24,497.00
A 1240.400-D	CHIEF SCHOOL ADMIN CONTRACTUAL/DW	8,000.00	7,000.00	1,000.00	14.286%	4,196.46	7,000.00	9,532.69
A 1240.450-D	CHIEF SCHOOL ADMIN SUPPLIES DW	1,000.00	1,000.00	0.00	0.000%	876.19	1,000.00	983.33
<b>1240</b>	<b>CHIEF SCHOOL ADMINISTRATOR *</b>	<b>235,948.59</b>	<b>227,274.00</b>	<b>8,674.59</b>	<b>3.817%</b>	<b>174,637.17</b>	<b>198,000.00</b>	<b>204,540.49</b>
<b>12</b>	<b>**</b>	<b>235,948.59</b>	<b>227,274.00</b>	<b>8,674.59</b>	<b>3.817%</b>	<b>174,637.17</b>	<b>198,000.00</b>	<b>204,540.49</b>
A 1310.150-D	BUSINESS ADM INST SALARY DW	0.00		0.00	<N/A>		100,000.00	6,000.00
A 1310.160-D	BUSINESS ADM NON	104,408.73	100,878.00	3,530.73	3.500%	114,968.01	42,000.00	119,022.73





Account	Description	2024 - 25 Proposed Budget	2023 - 24 Budget	Dollar Change	Percent Change	2023 - 24 Expenditures	2022 - 23 Budget	2022 - 23 Expenditures
A 1310.400-D	INST SALARY DW BUSINESS ADM CONTRACTUAL DW	76,000.00	76,000.00	0.00	0.000%	55,481.52	71,000.00	68,581.74
A 1310.450-D	BUSINESS ADM SUPPLIES D/W	2,500.00	2,000.00	500.00	25.000%	2,798.55	2,000.00	2,549.70
A 1310.490-D	BOCES BUSINESS ADM D/W	70,052.94	67,684.00	2,368.94	3.500%	53,824.67	75,600.00	67,059.36
<b>1310</b>	<b>BUSINESS ADMINISTRATION</b>	<b>252,961.67</b>	<b>246,562.00</b>	<b>6,399.67</b>	<b>2.596%</b>	<b>227,072.75</b>	<b>290,600.00</b>	<b>263,213.53</b>
A 1320.400-D	AUDITING CONTRACTUAL DW	25,000.00	24,000.00	1,000.00	4.167%	22,500.00	24,000.00	22,000.00
<b>1320</b>	<b>AUDITING</b>	<b>25,000.00</b>	<b>24,000.00</b>	<b>1,000.00</b>	<b>4.167%</b>	<b>22,500.00</b>	<b>24,000.00</b>	<b>22,000.00</b>
A 1325.160-D	TREASURER NON INST D/W	56,925.00	55,000.00	1,925.00	3.500%		44,000.00	15,769.12
A 1325.400-D	TREASURER CONTRACTUAL DW	1,000.00	1,000.00	0.00	0.000%		1,000.00	326.68
A 1325.450-D	TREASURER SUPPLIES D/W	1,000.00	1,000.00	0.00	0.000%		1,000.00	22.98
<b>1325</b>	<b>TREASURER</b>	<b>58,925.00</b>	<b>57,000.00</b>	<b>1,925.00</b>	<b>3.377%</b>	<b>0.00</b>	<b>46,000.00</b>	<b>16,118.78</b>
A 1330.400-D	TAX COLLECTION CONTRACTUAL DW	13,000.00	13,000.00	0.00	0.000%	9,878.11	13,000.00	8,371.34
A 1330.450-D	TAX COLLECTION SUPPLIES DW	1,000.00	1,000.00	0.00	0.000%		1,000.00	
<b>1330</b>	<b>TAX COLLECTOR</b>	<b>14,000.00</b>	<b>14,000.00</b>	<b>0.00</b>	<b>0.000%</b>	<b>9,878.11</b>	<b>14,000.00</b>	<b>8,371.34</b>
A 1380.400-D	FISCAL AGENT CONTRACTUAL DW	3,000.00	3,000.00	0.00	0.000%		3,000.00	14,731.79
<b>1380</b>	<b>FISCAL AGENT FEE</b>	<b>3,000.00</b>	<b>3,000.00</b>	<b>0.00</b>	<b>0.000%</b>	<b>0.00</b>	<b>3,000.00</b>	<b>14,731.79</b>
<b>13</b>		<b>353,886.67</b>	<b>344,562.00</b>	<b>9,324.67</b>	<b>2.706%</b>	<b>259,450.86</b>	<b>377,600.00</b>	<b>324,435.44</b>
A 1420.400-D	LEGAL CONTRACTUAL D/W	25,000.00	25,000.00	0.00	0.000%	14,771.93	22,000.00	12,093.51
<b>1420</b>	<b>LEGAL</b>	<b>25,000.00</b>	<b>25,000.00</b>	<b>0.00</b>	<b>0.000%</b>	<b>14,771.93</b>	<b>22,000.00</b>	<b>12,093.51</b>
A 1430.400-D	PERSONNEL CONTRACTUAL D/W	3,000.00	3,000.00	0.00	0.000%		3,000.00	

Budgeting Appropriation Status Report For 2024-2025 EXPENSE BUDGET (Detail)

Account	Description	2024 - 25 Proposed Budget	2023 - 24 Budget	Dollar Change	Percent Change	2023 - 24 Expenditures	2022 - 23 Budget	2022 - 23 Expenditures
A 1430.490-D	BOCES PERSONNEL DW	97,390.40	94,097.00	3,293.40	3.500%	55,177.96	72,458.00	88,771.35
1430	PERSONNEL *	100,390.40	97,097.00	3,293.40	3.392%	55,177.96	75,458.00	88,771.35
14	**	125,390.40	122,097.00	3,293.40	2.697%	69,949.89	97,458.00	100,864.86
A 1620.160	OPERATIONS NON INST SALARY DW	304,234.11	293,946.00	10,288.11	3.500%	229,027.30	284,525.00	280,906.93
A 1620.200	OPERATIONS EQ DW	75,000.00	53,000.00	22,000.00	41.509%	49,380.09	45,000.00	46,845.00
A 1620.400-11	OPERATIONS GAS & ELECTRIC DW	375,000.00	362,500.00	12,500.00	3.448%	262,340.35	330,000.00	287,109.10
A 1620.400-12	OPERATION WATER & SEWER DW	30,000.00	30,050.00	(50.00)	(0.166%)	22,607.76	28,000.00	20,663.63
A 1620.400-13	OPERATION TELEPHONE DW	20,500.00	19,800.00	700.00	3.535%	13,227.44	20,000.00	15,615.92
A 1620.400-14	OPERATION - CARTING DW	20,000.00	20,000.00	0.00	0.000%	18,738.80	24,000.00	15,079.20
A 1620.400-15	OPERATIONS SERVICE CONTRACTS DW	95,000.00	92,700.00	2,300.00	2.481%	21,175.33	90,000.00	33,223.11
A 1620.400-16	OPERATIONS ALT & REPAIR DW	20,000.00	20,000.00	0.00	0.000%	42,433.60	22,000.00	14,861.70
A 1620.400-17	OPERATIONS INSURANCE DW	6,000.00	6,000.00	0.00	<N/A>		68,000.00	67,847.00
A 1620.400-18	OPERATIONS LEAD TESTING/FIXTURE DW	5,000.00	3,000.00	2,000.00	0.000%		6,000.00	
A 1620.450-11	OPERATIONS GENERAL SUPPLIES DW	50,000.00	45,000.00	5,000.00	66.667%	2,933.73	3,000.00	1,391.61
A 1620.450-40	OPERATIONS CLEANING SUPPLIES DW	4,000.00	4,000.00	0.00	11.111%	67,245.40	42,000.00	49,966.76
A 1620.450-88	OPERATIONS WATER TREATMENT DW	11,000.00	11,000.00	0.00	0.000%	419.50	11,000.00	8,413.88
A 1620.450-90	OPERATIONS - ROAD SALT/SAND	3,500.37	3,382.00	118.37	3.500%	7,602.40	7,000.00	9,191.00
A 1620.490	SHARED OPERATIONS DIRECTOR DW	1,019,234.48	964,378.00	54,856.48	5.688%	737,131.70	984,525.00	851,114.84
1620	OPERATION OF PLANT *	372,077.33	359,495.00	12,582.33	3.500%	239,872.60	304,374.00	285,383.18
A 1621.160	MAINTENANCE NON INST SALARY DW	5,000.00	5,000.00	0.00	0.000%		5,000.00	568.00
A 1621.400-61	MAINTENANCE HEAT CONTROL DW	95,000.00	95,087.00	(87.00)	(0.091%)	28,767.20	5,000.00	5,773.48
A 1621.400-66	MAINTENANCE ALT &							

Budgeting Appropriation Status Report For 2024-2025 EXPENSE BUDGET (Detail)

Account	Description	2024 - 25 Proposed Budget	2023 - 24 Budget	Dollar Change	Percent Change	2023 - 24 Expenditures	2022 - 23 Budget	2022 - 23 Expenditures
A 1621.400-71	REPAIR DW MAINTENANCE EQ	5,000.00	5,000.00	0.00	0.000%	652.50	5,000.00	385.00
A 1621.400-74	REPAIR DW MAINTENANCE KEYS, LOCKS, HARDWARE DW	1,000.00	1,000.00	0.00	0.000%		1,000.00	
A 1621.400-78	MAINTENANCE MISC DW	30,000.00	30,000.00	0.00	0.000%	16,744.84	30,000.00	3,774.49
A 1621.450-11	MAINTENANCE MISCJ DW	100,000.00	100,000.00	0.00	0.000%	68,370.70	100,000.00	80,448.42
A 1621.450-89	MAINTENANCE EQ PARTS DW	6,000.00	6,000.00	0.00	0.000%	4,327.87	6,000.00	6,123.55
A 1621.490	BOCES MAINTENANCE DW	18,861.84	18,224.00	637.84	3.500%	41,408.22	21,000.00	29,895.62
1621	MAINTENANCE OF PLANT	632,939.17	619,806.00	13,133.17	2.119%	400,143.93	477,374.00	412,351.74
A 1670.400-D	CENTRAL PRINT & MAIL CONTRACTUAL DW	10,000.00	10,000.00	0.00	0.000%	8,887.12	10,000.00	4,077.12
A 1670.450-D	CENTRAL PRINT & MAIN SUPPLIES DW	20,000.00	20,000.00	0.00	0.000%	18,692.31	20,000.00	29,897.70
A 1670.490-D	BOCES PRINT SERVICES DW	22,415.00	21,657.00	758.00	3.500%	34,182.29	29,900.00	41,330.22
1670	CENTRAL PRINTING & MAILING	52,415.00	51,657.00	758.00	1.467%	61,761.72	59,900.00	75,305.04
16		1,704,588.65	1,635,841.00	68,747.65	4.203%	1,199,037.35	1,521,799.00	1,338,771.62
A 1910.400-D	UNALLOCATED INSURANCE CONTRACTUAL DW	100,395.00	97,000.00	3,395.00	3.500%	95,012.00	28,000.00	26,432.00
1910	UNALLOCATED INSURANCE	100,395.00	97,000.00	3,395.00	3.500%	95,012.00	28,000.00	26,432.00
A 1920.400-D	SCHOOL ASSOC DUES CONTRACTUAL DW	14,800.00	14,800.00	0.00	0.000%	13,590.00	14,000.00	12,250.75
1920	SCHOOL ASSOCIATION DUES	14,800.00	14,800.00	0.00	0.000%	13,590.00	14,000.00	12,250.75
A 1930.400-D	JUDGEMENTS & CLAIMS CONTRACTUAL DW	2,000.00	2,000.00	0.00	0.000%		2,000.00	1,049.00
1930	JUDGMENTS & CLAIMS	2,000.00	2,000.00	0.00	0.000%	0.00	2,000.00	1,049.00



Account	Description	2024 - 25 Proposed Budget	2023 - 24 Budget	Dollar Change	Percent Change	2023 - 24 Expenditures	2022 - 23 Budget	2022 - 23 Expenditures
A 1964.400-D	PROPERTY TAX REFUNDS CONTRACTUAL/DW	25,000.00	25,000.00	0.00	0.00%		5,000.00	45,948.19
1964	REFUND ON REAL PROPERTY TAXES	25,000.00	25,000.00	0.00	0.00%	0.00	5,000.00	45,948.19
A 1981.490-D	BOCES ADMIN COST DW	551,254.00	502,284.00	48,970.00	9.749%	471,940.61	458,708.00	524,794.68
1981	BOCES ADMINISTRATIVE * COSTS	551,254.00	502,284.00	48,970.00	9.749%	471,940.61	458,708.00	524,794.68
A 1983.490-D	BOCES CAPITAL EXPENSE DW	1,405,890.00	1,807,806.00	(401,916.00)	(22.232%)	1,702,706.82	192,940.00	124,370.49
1983		1,405,890.00	1,807,806.00	(401,916.00)	(22.232%)	1,702,706.82	192,940.00	124,370.49
19		2,099,339.00	2,448,890.00	(349,551.00)	(14.274%)	2,283,249.43	700,648.00	734,845.11
1		4,562,877.86	4,821,451.00	(258,573.14)	(5.363%)	4,006,161.44	2,938,505.00	2,732,313.61
A 2020.150-E	SUPERVISION INST SALARY ELEM	248,593.55	240,187.00	8,406.55	3.500%	185,306.31	234,726.00	232,876.00
A 2020.150-H	SUPERVISION INST SALARY HIGH	416,083.46	402,013.00	14,070.46	3.500%	234,398.20	257,565.00	251,238.97
A 2020.160-E	SUPERVISION NON INST SALARY ELEM	69,245.64	66,904.00	2,341.64	3.500%	51,959.42	64,667.00	63,165.44
A 2020.160-H	SUPERVISION NON INST SALARY HIGH	74,403.05	71,887.00	2,516.05	3.500%	64,212.48	68,443.00	66,996.94
A 2020.200-E	SUPERVISION EQ ELEM	1,000.00	1,000.00	0.00	0.000%		1,000.00	
A 2020.200-H	SUPERVISION EQ HIGH	1,000.00	1,000.00	0.00	0.000%		1,000.00	
A 2020.400-E	SUPERVISION CONTRACTUALELEM	7,000.00	7,000.00	0.00	0.000%	91.56	7,000.00	575.18
A 2020.400-H	SUPERVISION CONTRACTUALHIGH	7,000.00	7,000.00	0.00	0.000%	2,788.03	7,000.00	405.00
A 2020.450-E	SUPERVISION SUPPLIES ELEM	11,000.00	11,000.00	0.00	0.000%	956.12	11,000.00	433.95
A 2020.450-H	SUPERVISION SUPPLIES HIGH	11,000.00	11,000.00	0.00	0.000%	6,185.78	11,000.00	7,740.55
2020	SUPERVISION-REGULAR * SCHOOL	846,325.70	818,991.00	27,334.70	3.338%	545,897.90	663,401.00	623,432.03
A 2070.150-D	INSERVICE TRAINING -	25,875.00	25,000.00	875.00	3.500%	250.00	25,000.00	3,250.00



Account	Description	2024 - 25 Proposed Budget	2023 - 24 Budget	Dollar Change	Percent Change	2023 - 24 Expenditures	2022 - 23 Budget	2022 - 23 Expenditures
2070	INSTRUCTION/DW INSERVICE TRAINING- INSTRUCTION *	25,875.00	25,000.00	875.00	3.500%	250.00	25,000.00	3,250.00
20	**	872,200.70	843,991.00	28,209.70	3.342%	546,147.90	688,401.00	626,682.03
A 2110.100-PK	TEACHING PRE-K	50,000.00	49,812.00	188.00	0.377%	75.00	77,016.00	26,775.00
A 2110.120-4	TEACHING GRADE 4	408,713.22	394,892.00	13,821.22	3.500%	262,228.66	414,044.00	342,765.16
A 2110.120-5	TEACHING GRADE 5	385,958.75	372,907.00	13,051.75	3.500%	246,468.73	462,208.00	363,631.96
A 2110.120-K3	TEACHING K-3	1,746,552.15	1,687,490.00	59,062.15	3.500%	937,143.18	1,606,067.00	1,267,884.61
A 2110.120-TU-TOR	TEACHING SALARIES TUTORING SERVICES	153,688.10	302,717.00	(149,028.90)	(49.230%)			
A 2110.130-6	TEACHING GRADE 6	497,601.09	480,774.00	16,827.09	3.500%	279,234.23	398,291.00	454,229.10
A 2110.130-7	TEACHING GRADE 7	370,544.49	358,014.00	12,530.49	3.500%	291,721.35	371,582.00	339,930.39
A 2110.130-8	TEACHING GRADE 8	462,987.59	447,331.00	15,656.59	3.500%	326,060.67	457,287.00	423,403.40
A 2110.130-91-2	TEACHING 9-12	1,520,453.30	1,469,037.00	51,416.30	3.500%	934,367.99	1,410,128.00	1,319,350.95
A 2110.140-D	TEACHING SUBSTITUTE SALARY DW	140,000.00	140,000.00	0.00	0.000%	103,952.51	140,000.00	111,963.58
A 2110.160-E	TEACHING REG SCHOOL NON INST SAL ELEM	53,820.00	52,000.00	1,820.00	3.500%	442.50	52,000.00	146.92
A 2110.160-H	TEACHING REG SCHOOL NON INST SAL HIGH	26,039.57	25,159.00	880.57	3.500%	19,878.72	24,436.00	24,196.97
A 2110.200-E	TEACHING EQ ELEM	25,000.00	22,000.00	3,000.00	13.636%	24,749.60	22,000.00	
A 2110.200-H	TEACHING EQ HIGH	135,000.00	196,130.00	(61,130.00)	(31.168%)	59,617.58	22,000.00	4,080.00
A 2110.400-E	TEACHING CONTRACTUAL ELEM	116,500.00	116,500.00	0.00	0.000%	61,249.32	117,000.00	80,658.32
A 2110.400-H	TEACHING CONTRACTUAL HIGH	116,500.00	116,500.00	0.00	0.000%	79,079.76	117,000.00	76,767.25
A 2110.450-E	TEACHING SUPPLIES ELEM	65,000.00	63,000.00	2,000.00	3.175%	55,921.28	63,000.00	65,827.24
A 2110.450-H	TEACHING SUPPLIES HIGH	58,000.00	56,000.00	2,000.00	3.571%	29,976.08	56,000.00	51,118.12
A 2110.471-D	TEACHING TUITION PUBLIC DW	15,000.00	15,000.00	0.00	0.000%		20,000.00	9,076.00
A 2110.473-D	TEACHING TUITION CHARTER SCHOOL DW	20,000.00		20,000.00	<N/A>	11,537.00		8,631.70
A 2110.480-D	TEACHING TEXTBOOK DW	80,000.00	77,000.00	3,000.00	3.896%	36,417.73	77,000.00	58,319.29
A 2110.490-D	BOCES TEACHING DW	1,002,295.04	968,401.00	33,894.04	3.500%	1,059,048.08	723,746.00	756,281.64



Account	Description	2024 - 25 Proposed Budget	2023 - 24 Budget	Dollar Change	Percent Change	2023 - 24 Expenditures	2022 - 23 Budget	2022 - 23 Expenditures
2110	TEACHING-REGULAR SCHOOL	7,449,653.30	7,410,664.00	38,989.30	0.526%	4,819,169.97	6,630,805.00	5,785,037.60
21	**	7,449,653.30	7,410,664.00	38,989.30	0.526%	4,819,169.97	6,630,805.00	5,785,037.60
A 2250.150-E	SPECIAL EDUC INST SALARY ELEM	624,715.65	603,590.00	21,125.65	3.500%	397,161.59	536,046.00	432,797.94
A 2250.150-H	SPECIAL EDUC INST SALARY HIGH	532,973.25	514,950.00	18,023.25	3.500%	328,766.83	576,291.00	440,585.01
A 2250.160-E	SPECIAL EDUC NON INST SALARY ELEM	57,505.64	55,561.00	1,944.64	3.500%	118,657.86	49,196.00	89,168.97
A 2250.160-H	SPECIAL EDUC NON INST SALARY HIGH	52,330.64	50,561.00	1,769.64	3.500%	42,715.19	49,196.00	46,629.00
A 2250.200-D	SPECIAL EDUCATION EQ DW	2,000.00	2,000.00	0.00	0.000%	278.94	2,000.00	
A 2250.400-D	SPECIAL EDUCATION CONTRACTUAL DW	185,000.00	185,000.00	0.00	0.000%	82,869.93	300,000.00	168,169.95
A 2250.450-D	SPECIAL EDUCATION SUPPLIES DW	5,000.00	5,000.00	0.00	0.000%	4,803.81	5,000.00	2,628.81
A 2250.471-D	SPECIAL EDUCATION TUITION PUBLIC DW	125,000.00	315,000.00	(190,000.00)	(60.317%)	96,655.30	100,000.00	165,794.37
A 2250.472-D	SPECIAL EDUCATION TUITION OTHER DW	315,000.00	125,000.00	190,000.00	152.000%	201,225.07	10,000.00	186,136.58
A 2250.480-D	SPECIAL EDUCATION TEXTBOOK DW	5,000.00	5,000.00	0.00	0.000%	1,825.00	5,000.00	1,092.12
A 2250.490-D	BOCES SPECIAL EDUCATION DW	3,313,053.63	3,201,018.00	112,035.63	3.500%	1,993,421.05	2,951,154.00	2,387,482.84
2250	PROGRAMS-STUDENTS W/ DISABIL	5,217,578.81	5,062,680.00	154,898.81	3.060%	3,268,380.57	4,583,883.00	3,920,485.59
A 2280.490-D	BOCES OCCUPATIONAL EDUCATION DW	616,316.63	595,475.00	20,841.63	3.500%	460,684.82	562,000.00	561,769.00
2280	OCCUPATIONAL EDUCATION	616,316.63	595,475.00	20,841.63	3.500%	460,684.82	562,000.00	561,769.00
22	**	5,833,895.44	5,658,155.00	175,740.44	3.106%	3,729,065.39	5,145,883.00	4,482,254.59
A 2330.150-E	SPECIAL SCHOOLS INST SALARY ELEM	41,400.00	40,000.00	1,400.00	3.500%	2,019.15	40,000.00	2,500.00
A 2330.160-E	SPECIAL SCHOOLS NON INST SALARY ELEM	2,070.00	2,000.00	70.00	3.500%		2,000.00	
A 2330.400-E	SPECIAL SCHOOLS	2,000.00	2,000.00	0.00	0.000%		2,000.00	



Account	Description	2024 - 25 Proposed Budget	2023 - 24 Budget	Dollar Change	Percent Change	2023 - 24 Expenditures	2022 - 23 Budget	2022 - 23 Expenditures
	CONTRACTUAL ELEM							
A 2330.450-E	SPECIAL SCHOOLS SUPPLIES ELEM	2,000.00	2,000.00	0.00	0.000%	439.66	2,000.00	216.51
A 2330.490-D	BOCES SPECIAL SCHOOLS/DW	87,135.62	84,189.00	2,946.62	3.500%	76,927.20	53,000.00	74,989.00
<b>2330</b>	<b>TEACHING-SPECIAL SCHOOLS</b>	<b>134,605.62</b>	<b>130,189.00</b>	<b>4,416.62</b>	<b>3.392%</b>	<b>79,386.01</b>	<b>99,000.00</b>	<b>77,705.51</b>
<b>23</b>	<b>**</b>	<b>134,605.62</b>	<b>130,189.00</b>	<b>4,416.62</b>	<b>3.392%</b>	<b>79,386.01</b>	<b>99,000.00</b>	<b>77,705.51</b>
A 2610.150-E	INST MEDIA INST SALARY ELEM	111,600.95	107,827.00	3,773.95	3.500%	73,033.53	50,000.00	104,456.71
A 2610.150-H	INST MEDIA INST SALARY HIGH	50,211.99	48,514.00	1,697.99	3.500%	32,989.52	50,000.00	46,963.00
A 2610.400-E	INST MEDIA CONTRACTUAL ELEM	500.00	500.00	0.00	0.000%	465.75	500.00	453.19
A 2610.400-H	INST MEDIA CONTRACTUAL HIGH	500.00	500.00	0.00	0.000%		500.00	
A 2610.450-E	INST MEDIA SUPPLIES ELEM	4,000.00	4,000.00	0.00	0.000%		4,000.00	
A 2610.450-H	INST MEDIA SUPPLIES HIGH	4,000.00	4,000.00	0.00	0.000%	3,191.29	4,000.00	4,290.92
A 2610.450-P	INST MEDIA SUPPLIES PRIVATE SCHOOL	1,000.00	1,000.00	0.00	0.000%		1,000.00	
A 2610.460-E	LIB MATERIAL STATE AIDED ELEM	4,000.00	4,000.00	0.00	0.000%	4,935.96	4,000.00	5,869.67
A 2610.460-H	LIB MATERIAL STATE AIDED HIGH	4,000.00	4,000.00	0.00	0.000%	3,361.18	4,000.00	3,805.34
A 2610.490-D	BOCES INST MEDIA/DW	115,222.41	111,326.00	3,896.41	3.500%	77,575.08	74,500.00	105,219.72
<b>2610</b>	<b>SCHOOL LIBRARY &amp; AUDIOVISUAL</b>	<b>295,035.35</b>	<b>285,667.00</b>	<b>9,368.35</b>	<b>3.279%</b>	<b>195,552.31</b>	<b>192,500.00</b>	<b>271,058.55</b>
A 2630.150-D	COMPUTER INSTR SALARY/DW	56,410.61	54,503.00	1,907.61	3.500%	27,711.62	125,286.00	53,399.15
A 2630.200-D	COMPUTER INSTR EQ DW	350,000.00	127,500.00	222,500.00	174.510%	3,500.00	26,000.00	12,376.00
A 2630.220-D	COMPUTER INSTR HARDWARE/DW	27,500.00	26,000.00	1,500.00	5.769%	4,987.53	26,000.00	26,000.00
A 2630.400-D	COMPUTER INSTR CONTRACTUAL/DW	5,000.00	5,000.00	0.00	0.000%	672.00	5,000.00	2,817.20
A 2630.450-D	COMPUTER INSTR SUPPLIES/DW	9,000.00	9,000.00	0.00	0.000%	4,273.67	8,000.00	1,814.12

Budgeting Appropriation Status Report For 2024-2025 EXPENSE BUDGET (Detail)



Account	Description	2024 - 25 Proposed Budget	2023 - 24 Budget	Dollar Change	Percent Change	2023 - 24 Expenditures	2022 - 23 Budget	2022 - 23 Expenditures
A 2630.460-D	COMPUTER INST SOFTWARE/DW	18,000.00	17,500.00	500.00	2.857%	20,159.00	17,000.00	14,897.00
A 2630.490-D	BOCES COMPUTER INSTR/DW	585,852.44	566,041.00	19,811.44	3.500%	693,437.62	576,805.00	549,928.01
<b>2630</b>	<b>COMPUTER ASSISTED INSTRUCTION</b>	<b>1,051,763.05</b>	<b>805,544.00</b>	<b>246,219.05</b>	<b>30.566%</b>	<b>754,741.44</b>	<b>784,091.00</b>	<b>661,231.48</b>
<b>26</b>	<b>**</b>	<b>1,346,798.40</b>	<b>1,091,211.00</b>	<b>255,587.40</b>	<b>23.422%</b>	<b>950,293.75</b>	<b>976,591.00</b>	<b>932,290.03</b>
A 2810.150-E	GUIDANCE INST SALARY ELEM	53,043.75	51,250.00	1,793.75	3.500%		49,658.00	
A 2810.150-H	GUIDANCE INST SALARY HIGH	146,953.44	141,984.00	4,969.44	3.500%	105,553.66	127,792.00	38,981.49
A 2810.160-H	GUIDANCE INST NON INST SAL HIGH	43,564.19	42,091.00	1,473.19	3.500%	34,749.46	40,473.00	42,663.80
A 2810.200-E	GUIDANCE EQ ELEM	500.00	500.00	0.00	0.000%		500.00	
A 2810.200-H	GUIDANCE EQ HIGH	500.00	500.00	0.00	0.000%	79.76	500.00	
A 2810.400-H	GUIDANCE CONTRACTUAL HIGH	1,000.00	1,000.00	0.00	0.000%	214.96	1,000.00	
A 2810.450-H	GUIDANCE SUPPLIES HIGH	1,500.00	1,500.00	0.00	0.000%	316.22	1,500.00	514.31
A 2810.490-D	BOCES GUIDANCE DW	216,910.13	209,575.00	7,335.13	3.500%	167,193.54	192,750.00	197,438.94
<b>2810</b>	<b>GUIDANCE-REGULAR SCHOOL</b>	<b>463,971.51</b>	<b>448,400.00</b>	<b>15,571.51</b>	<b>3.473%</b>	<b>308,107.60</b>	<b>414,173.00</b>	<b>279,598.54</b>
A 2815.160-E	HEALTH SERVICES NON INST SALARY ELEM	87,337.44	84,384.00	2,953.44	3.500%	59,312.41	77,287.00	80,881.83
A 2815.160-H	HEALTH SERVICES NON INST SALARY HIGH	51,887.66	50,133.00	1,754.66	3.500%	34,065.94	45,540.00	45,963.71
A 2815.400-E	HEALTH SERVICES CONTRACTUAL ELEM	5,000.00	5,000.00	0.00	0.000%	3,117.98	5,000.00	3,292.00
A 2815.400-H	HEALTH SERVICES CONTRACTUAL HIGH	10,000.00	10,000.00	0.00	0.000%	3,839.49	15,000.00	4,795.00
A 2815.450-E	HEALTH SERVICES SUPPLIES ELEM	2,500.00	2,500.00	0.00	0.000%	2,063.18	2,000.00	2,401.77
A 2815.450-H	HEALTH SERVICES SUPPLIES HIGH	3,000.00	2,500.00	500.00	20.000%	4,482.89	2,000.00	2,285.92
<b>2815</b>	<b>HEALTH SERVICES-REGULAR SCHOOL</b>	<b>159,725.10</b>	<b>154,517.00</b>	<b>5,208.10</b>	<b>3.371%</b>	<b>106,881.89</b>	<b>146,827.00</b>	<b>139,620.23</b>
A 2820.150-E	PSYCH INST SALARY ELEM	51,750.00	50,000.00	1,750.00	3.500%	23,520.00	50,000.00	26,981.25





Budgeting Appropriation Status Report For 2024-2025 EXPENSE BUDGET (Detail)

Account	Description	2024 - 25 Proposed Budget	2023 - 24 Budget	Dollar Change	Percent Change	2023 - 24 Expenditures	2022 - 23 Budget	2022 - 23 Expenditures
A 2820.150-H	PSYCH INST SALARY HIGH	51,750.00	50,000.00	1,750.00	3.500%	25,370.00	50,000.00	26,981.25
A 2820.450-E	PSYCH SUPPLIES ELEM	500.00	500.00	0.00	0.000%	426.53	500.00	
A 2820.450-H	PSYCH SUPPLIES HIGH	500.00	500.00	0.00	0.000%	426.52	500.00	
<b>2820</b>	<b>PSYCHOLOGICAL SRVC- REG SCHOOL</b>	<b>104,500.00</b>	<b>101,000.00</b>	<b>3,500.00</b>	<b>3.465%</b>	<b>49,743.05</b>	<b>101,000.00</b>	<b>53,962.50</b>
A 2850.150-E	CO CURR INST SALARY ELEM	27,945.00	27,000.00	945.00	3.500%	12,595.96	27,000.00	22,872.00
A 2850.150-H	CO CURR INST SALARY HIGH	72,450.00	70,000.00	2,450.00	3.500%	25,865.19	70,000.00	62,449.98
A 2850.160-E	CO CURR NON INST SALARY ELEM	2,070.00	2,000.00	70.00	3.500%		2,000.00	35.00
A 2850.160-H	CO CURR NON INST SALARY HIGH	2,070.00	2,000.00	70.00	3.500%	2,535.00	2,000.00	
A 2850.400-E	CO CURR CONTRACTUAL ELEM	3,000.00	3,000.00	0.00	0.000%		3,000.00	100.00
A 2850.400-H	CO CURR CONTRACTUAL HIGH	10,000.00	10,000.00	0.00	0.000%	4,231.25	10,000.00	
A 2850.450-E	CO CURR SUPPLIES ELEM	1,000.00	1,000.00	0.00	0.000%		1,000.00	
A 2850.450-H	CO CURR SUPPLIES HIGH	12,000.00	12,000.00	0.00	0.000%	1,757.16	12,000.00	9,443.76
<b>2850</b>	<b>CO-CURRICULAR ACTIV- REG SCHL</b>	<b>130,535.00</b>	<b>127,000.00</b>	<b>3,535.00</b>	<b>2.783%</b>	<b>46,984.56</b>	<b>127,000.00</b>	<b>94,900.74</b>
A 2855.150-H	INTER SCHOLASTIC ATHL INST SALARY HIGH	186,300.00	180,000.00	6,300.00	3.500%	125,722.34	180,000.00	141,825.00
A 2855.160-H	INTER SCHOLASTIC ATHL NON INST SALARY HIGH	3,105.00	3,000.00	105.00	3.500%		3,000.00	
A 2855.200-H	INTER SCHOLASTIC ATHL EQ HIGH	6,000.00	6,000.00	0.00	0.000%	4,257.49	3,000.00	3,000.00
A 2855.400-H	INTER SCHOLASTIC ATHL CONTRACTUAL HIGH	55,525.00	55,525.00	0.00	0.000%	43,500.72	50,000.00	58,803.32
A 2855.450-H	INTER SCHOLASTIC ATHL SUPPLIES HIGH	30,000.00	30,000.00	0.00	0.000%	26,052.22	30,000.00	26,940.28
<b>2855</b>	<b>INTERSCHOLATHLETICS -REG SCHL</b>	<b>280,930.00</b>	<b>274,525.00</b>	<b>6,405.00</b>	<b>2.333%</b>	<b>199,532.77</b>	<b>266,000.00</b>	<b>230,568.60</b>
<b>28</b>	<b>**</b>	<b>1,139,661.61</b>	<b>1,105,442.00</b>	<b>34,219.61</b>	<b>3.096%</b>	<b>711,249.87</b>	<b>1,055,000.00</b>	<b>798,650.61</b>

Budgeting Appropriation Status Report For 2024-2025 EXPENSE BUDGET (Detail)



Account	Description	2024 - 25 Proposed Budget	2023 - 24 Budget	Dollar Change	Percent Change	2023 - 24 Expenditures	2022 - 23 Budget	2022 - 23 Expenditures
2		16,776,815.07	16,239,652.00	537,163.07	3.308%	10,835,312.89	14,595,680.00	12,702,620.37
A 5510.160-D	TRANSPORTION NON INST SALARY DW	53,199.00	51,400.00	1,799.00	3.500%	37,181.43	53,400.00	36,316.67
A 5510.200-D	TRANSP EQ DW	7,500.00	7,500.00	0.00	0.000%		10,000.00	
A 5510.400-D	TRANS CONT DW	8,500.00	8,500.00	0.00	0.000%	8,500.00	3,000.00	576.00
A 5510.450-D	TRANS SUPPLIES DW			0.00	<N/A>			598.00
5510	DISTRICT TRANSPORT- MEDICAID	69,199.00	67,400.00	1,799.00	2.669%	45,681.43	66,400.00	37,490.67
A 5530.400-D	GARAGE CONTRACTUAL DW	14,750.00	14,500.00	250.00	1.724%	9,990.50	16,000.00	8,377.15
A 5530.450-D	GARAGE SUPPLIES DW		1,000.00	(1,000.00)	(100.000%)		1,000.00	
5530	GARAGE BUILDING	14,750.00	15,500.00	(750.00)	(4.839%)	9,990.50	17,000.00	8,377.15
A 5540.400-C-OB	TRANSPORTATION SCHOOL YR COB	1,475,000.00	1,420,118.00	54,882.00	3.865%	850,861.63		1,114,473.01
A 5540.400-D-OB	TRANSPORTATION SCHOOL YR DOB	220,000.00	212,195.00	7,805.00	3.678%	90,169.20		292,671.61
A 5540.400-D	CONTRACT TRANS REGULAR RUNS DW			0.00	<N/A>		1,611,000.00	259,271.50
A 5540.401-A-THL	TRANSPORTATION ATHLETICS	115,000.00	112,016.00	2,984.00	2.664%	37,287.45		59,356.17
A 5540.401-F-T	TRANSPORTATION FIELD TRIPS	65,000.00	64,881.00	119.00	0.183%	17,159.85		38,224.61
5540	CONTRACT TRANSPORT- MEDICAID	1,875,000.00	1,809,210.00	65,790.00	3.636%	995,478.13	1,611,000.00	1,763,996.90
55		1,958,949.00	1,892,110.00	66,839.00	3.533%	1,051,150.06	1,694,400.00	1,809,864.72
5		1,958,949.00	1,892,110.00	66,839.00	3.533%	1,051,150.06	1,694,400.00	1,809,864.72
A 9010.800-D	EMPLOYEE BENEFITS- ERS DW	166,720.05	158,781.00	7,939.05	5.000%	141,104.00	152,000.00	122,844.58
9010	STATE RETIREMENT	166,720.05	158,781.00	7,939.05	5.000%	141,104.00	152,000.00	122,844.58
A 9020.800-D	EMPLOYEE BENEFITS TRS DW	822,829.35	783,647.00	39,182.35	5.000%		818,585.00	735,044.80

Budgeting Appropriation Status Report For 2024-2025 EXPENSE BUDGET (Detail)



Account	Description	2024 - 25 Proposed Budget	2023 - 24 Budget	Dollar Change	Percent Change	2023 - 24 Expenditures	2022 - 23 Budget	2022 - 23 Expenditures
9020	TEACHERS' RETIREMENT *	822,829.35	783,647.00	39,182.35	5.000%	0.00	818,585.00	735,044.80
A 9030.800-D	EMPLOYEE BENEFITS FICA/DW	797,691.30	759,706.00	37,985.30	5.000%	553,064.47	746,375.00	711,120.63
9030	SOCIAL SECURITY *	797,691.30	759,706.00	37,985.30	5.000%	553,064.47	746,375.00	711,120.63
A 9040.800-D	EMPLOYEE BENEFITS WORKERS COMP DW	100,000.00	100,000.00	0.00	0.000%	93,792.00	115,484.00	88,693.00
9040	WORKERS' COMPENSATION *	100,000.00	100,000.00	0.00	0.000%	93,792.00	115,484.00	88,693.00
A 9050.800-D	EMPLOYEE BENEFITS UNEMPLOYMENT DW	13,000.00	13,000.00	0.00	0.000%	262.00	13,000.00	9,562.55
9050	UNEMPLOYMENT INSURANCE *	13,000.00	13,000.00	0.00	0.000%	262.00	13,000.00	9,562.55
A 9060.150	INSTRUCTIONAL HEALTH INSURANCE WAIVED	227,700.00	220,000.00	7,700.00	3.500%	106,277.15		195,015.49
A 9060.160	NON INSTRUCTIONAL HEALTH INS WAIVED	113,850.00	110,000.00	3,850.00	3.500%	67,896.65		105,222.61
A 9060.800-D	EMPLOYEE BENEFITS HEALTH & DENTAL DW	4,248,991.98	4,008,483.00	240,508.98	6.000%	3,623,722.22	4,353,047.00	3,671,236.90
9060	HOSPITAL, MEDICAL & DENTAL INS *	4,590,541.98	4,338,483.00	252,058.98	5.810%	3,797,896.02	4,353,047.00	3,971,475.00
A 9089.800-D	EMPLOYEE BENEFITS OTHER 403(B) DW	179,140.00	169,000.00	10,140.00	6.000%	80,697.98	45,000.00	320,472.63
9089	OTHER *	179,140.00	169,000.00	10,140.00	6.000%	80,697.98	45,000.00	320,472.63
90	**	6,669,922.68	6,322,617.00	347,305.68	5.493%	4,666,816.47	6,243,491.00	5,959,213.19
A 9711.600	SERIAL BONDS-PRINCIPAL-SCHOOL CONSTRUCTION	2,190,000.00	2,075,000.00	115,000.00	5.542%	710,000.00	2,040,000.00	1,860,000.00
A 9711.700	SERIAL BONDS-INTEREST-SCHOOL CONST	1,126,144.00	702,513.00	423,631.00	60.302%	508,637.50	706,888.00	897,658.33
9711	*	3,316,144.00	2,777,513.00	538,631.00	19.393%	1,218,637.50	2,746,888.00	2,757,658.33
A 9731.6	BAN Principal - School	0.00	115,000.00	(115,000.00)	(100.000%)			



Budgeting Appropriation Status Report For 2024-2025 EXPENSE BUDGET (Detail)

Account	Description	2024 - 25 Proposed Budget	2023 - 24 Budget	Dollar Change	Percent Change	2023 - 24 Expenditures	2022 - 23 Budget	2022 - 23 Expenditures
Construction								
A 9731..7	BAN Interest - School Construction		317,500.00	(317,500.00)	(100.000%)		158,750.00	72,800.00
9731	*	0.00	432,500.00	(432,500.00)	(100.000%)	0.00	158,750.00	72,800.00
A 9788..6	LEASE PRINCIPAL	151,248.00	153,000.00	(1,752.00)	(1.145%)	31,247.11		152,140.00
A 9788..7	LEASE INTEREST	26,799.88	12,700.00	14,099.88	111.023%	6,204.59		14,589.00
9788	*	178,047.88	165,700.00	12,347.88	7.452%	37,451.70	0.00	166,729.00
97	**	3,494,191.88	3,375,713.00	118,478.88	3.510%	1,256,089.20	2,905,638.00	2,997,187.33
A 9901.930	INTER FUND TRANSFERS -SCHOOL LUNCH	0.00	5,000.00	(5,000.00)	(100.000%)		5,000.00	5,000.00
A 9901.95	TRANSFER TO SPECIAL AID FUND	20,000.00	20,000.00	0.00	0.000%		20,000.00	14,987.35
9901	* TRANSFER TO SPECIAL AID	20,000.00	25,000.00	(5,000.00)	(20.000%)	0.00	25,000.00	19,987.35
A 9950.900	INTER FUND TRANSFERS -CAPITAL	450,000.00	100,000.00	350,000.00	350.000%	100,000.00	100,000.00	100,000.00
9950	* TRANSFER TO CAPITAL	450,000.00	100,000.00	350,000.00	350.000%	100,000.00	100,000.00	100,000.00
99	**	470,000.00	125,000.00	345,000.00	276.000%	100,000.00	125,000.00	119,987.35
9	***	10,634,114.56	9,823,330.00	810,784.56	8.254%	6,022,905.67	9,274,129.00	9,076,387.87
Grand Totals:		33,932,756.49	32,776,543.00	1,156,213.49	3.528%	21,915,530.06	28,502,714.00	26,321,186.57

## School District Budget Notice

Overall Budget Proposal	Budget Adopted for the 2023-24 School Year	Budget Proposed for the 2024-25 School Year	Contingency Budget for the 2024-25 School Year *
Total Budgeted Amount, Not Including Separate Propositions	\$ 32,776,543	\$ 33,932,756	\$ 33,767,364
Increase/Decrease for the 2024-25 School Year		\$ 1,156,213	\$ 990,821
Percentage Increase/Decrease in Proposed Budget		3.53 %	3.02 %
Change in the Consumer Price Index		4.12%	
A. Proposed Levy to Support the Total Budgeted Amount	\$ 9,451,000	\$ 9,616,392	
B. Levy to Support Library Debt, if Applicable	\$ 0	\$ 0	
C. Levy for Non-Excludable Propositions, if Applicable **	\$ 0	\$ 0	
D. Total Tax Cap Reserve Amount Used to Reduce Current Year Levy	\$ 0	\$ 0	
E. Total Proposed School Year Tax Levy (A + B + C - D)	\$ 9,451,000	\$ 9,616,392	\$ 9,451,000
F. Total Permissible Exclusions	\$ 113,060	\$ 268,229	
G. School Tax Levy Limit, <u>Excluding</u> Levy for Permissible Exclusions	\$ 9,341,457	\$ 9,491,931	
H. Total Proposed School Year Tax Levy, <u>Excluding</u> Levy to Support Library Debt and/or Permissible Exclusions (E - B - F + D)	\$ 9,337,940	\$ 9,348,163	
I. Difference: G - H (Negative Value Requires 60.0% Voter Approval - See Note Below Regarding Separate Propositions) **	\$ 3,517	\$ 143,768	
Administrative Component	\$ 4,470,753	\$ 4,194,890	\$ 4,194,890
Program Component	\$ 22,736,304	\$ 23,605,852	\$ 23,440,460
Capital Component	\$ 5,569,486	\$ 6,132,014	\$ 6,132,014

\* Pursuant to the Laws of Section 2023 of the Education Law and the NYS Property Tax Cap Legislation, the maximum amount of tax that could be raised under a contingent budget would be \$165,392 less than the amount presented in the proposed budget. In the event of a budget defeat the actual contingent budget would be determined by the Board of Education.

\*\* The proposed tax levy increase is 1.75%. Under the NYS Property Tax Cap Legislation the Maximum Allowable Tax Levy without super majority approval is 3.27%. The actual tax levy is determined by the Board of Education in August of each year.

\*\*\* List Separate Propositions that are not included in the Total Budgeted Amount: (Tax Levy associated with educational or transportation services propositions are not eligible for exclusion and may affect voter approval requirements)

Description	Amount
Establishment of Capital Reserve Fund #3	\$ 5,000,000

	Under the Budget Proposed for the 2024-25 School Year
Estimated Basic STAR Exemption Savings <sup>1</sup>	\$ 571.20

The annual budget vote for the fiscal year 2024-25 by the qualified voters of the Herkimer Central School District, Herkimer County, New York, will be held at Herkimer High School in said district on **Tuesday, May 21, 2024 between the hours of noon and 8:00pm**, prevailing time in the High School Media Center, at which time the polls will be opened to vote by voting machine.

1. The basic school tax relief (STAR) exemption is authorized by section 425 of the Real Property Tax Law.

Form Due May 13, 2024

2024-2025 Salary Threshold =  
\$169,000

In response to legislative efforts to encourage greater cost sharing in service provision and local government administration, we now provide a section for districts that share administrative staff to highlight these efforts for the upcoming school year. Each sharing district should identify in the form the other district(s) with which they will be sharing administrative staff for school year 2024-2025.

If you will be sharing a Superintendent, list the other district (or districts) in the text box. If you will be sharing other administrative staff required to be reported, please send an email to [EMSCMGTS@nysed.gov](mailto:EMSCMGTS@nysed.gov) indicating the title of the staff persons(s) as well as the other district(s) involved in the cost-sharing.

The salaries, benefits and other compensation reported in the form should reflect only the financial support or commitment that your district will be making. They should **not** reflect the total amounts budgeted to be paid by all participating districts over the school year.

Report Estimated Salaries in the Budget for the 2024-2025 School Year

Sections 1608 and 1716 of the Education Law  
(Please read the instructions and definitions before completing this form.)

	Title	Salary	Employee Benefits	Other Remuneration
1.	Superintendent of Schools	169,700	42,271	5,400

Please list the district or districts with which you will be sharing a superintendent (if applicable):

Associate, Assistant and Deputy Superintendents  
(Example Titles: Associate Superintendent for Instruction, Deputy Superintendent, Assistant Superintendent for Business, etc.)

2.				
3.				
4.				
5.				
6.				
7.				
8.				
9.				
10.				
11.				
12.				
13.				
14.				
15.				
16.				
17.				
18.				
19.				
20.				
21.				
22.				
23.				
24.				
25.				
26.				
27.				
28.				
29.				
30.				
31.				
32.				
33.				
34.				
35.				

\*\*\*\*Please use Chrome or Firefox browsers when entering the Business Portal to complete the PTRC. Internet Explorer is NOT recommended.\*\*\*\*

Note: Some data elements of the Property Tax Report Card have been revised or renamed to more closely follow the Property Tax Cap calculations districts complete on the Office of the State Comptroller website. Please see the Help text above for definitions. Additional guidance on the Property Tax Levy Limit is available on the Office of Educational Management Services website:  
<http://www.p12.nysed.gov/mgtserv/propertytax/taxcap/>.

Please also submit an electronic version (PDF or Word) of your school district's 2024-25 Budget Notice to: emscmgts@nysed.gov. This will enable us to help correct any formula or data entry discrepancy quickly.

**Notice: The Enacted Budget allows school districts to establish a reserve fund for NYS Teachers' Retirement System Contributions, effective immediately. This reserve, if applicable, should be reported in the Schedule of Reserves under 'Other Reserve' and with a description that says: "To fund employer retirement contributions to the New York State Teachers' Retirement System (TRS.)"**

Form Due - April 29, 2024

Form Preparer Name:  
Preparer's Telephone Number:

CHAD HESS
315-866-2230

<u>Shaded Fields Will Calculate</u>	Budgeted 2023-24 (A)	Proposed Budget 2024-25 (B)	Percent Change (C)
Total Budgeted Amount, not including Separate Propositions	32,776,543	33,932,756	3.53 %
A. Proposed Tax Levy to Support the Total Budgeted Amount <sup>1</sup>	9,451,000	9,616,392	
B. Tax Levy to Support Library Debt, if Applicable			
C. Tax Levy for Non-Excludable Propositions, if Applicable <sup>2</sup>			
D. Total Tax Cap Reserve Amount Used to Reduce Current Year Levy, if Applicable			
E. Total Proposed School Year Tax Levy (A+B+C-D)	9,451,000	9,616,392	1.75 %
F. Permissible Exclusions to the School Tax Levy Limit	113,060	268,229	
G. School Tax Levy Limit, <u>Excluding</u> Levy for Permissible Exclusions <sup>3</sup>	9,341,457	9,491,931	
H. Total Proposed Tax Levy for School Purposes, <u>Excluding</u> Permissible Exclusions and Levy for Library Debt, Plus Prior Year Tax Cap Reserve (E-B-F+D)	9,337,940	9,348,163	
I. Difference: (G-H);(negative value requires 60.0% voter approval) <sup>2</sup>	3,517	143,768	
Public School Enrollment	1,095	1,100	0.46 %
Consumer Price Index			4.12 %

<sup>1</sup> Include any prior year reserve for excess tax levy, including interest.

<sup>2</sup> Tax levy associated with educational or transportation services propositions are not eligible for exclusion under the School Tax Levy Limit and may affect voter approval requirements.

<sup>3</sup> For 2024-25, includes any carryover from 2023-24 and excludes any tax levy for library debt or prior year reserve for

excess tax levy, including interest.

	Actual 2023-24 (D)	Estimated 2024-25 (E)
Adjusted Restricted Fund Balance	7,456,529	7,829,355
Assigned Appropriated Fund Balance	0	0
Adjusted Unrestricted Fund Balance	1,307,784	1,353,916
Adjusted Unrestricted Fund Balance as a Percent of the Total Budget	3.99 %	3.99 %

**Schedule of Reserve Funds**

Reserve Type	Reserve Name	Reserve Description *	3/31/24 Actual Balance	6/30/24 Estimated Ending Balance	Intended Use of the Reserve in the 2024-25 School Year (Limit 200 Characters)**
--------------	--------------	-----------------------	------------------------	----------------------------------	---

**Note: Be sure to click on the Save button at the bottom after each additional Reserve you add under Capital, Property Loss, Liability, or Other Reserve.**

Capital	CAPITAL RESERVE	For the cost of any object or purpose for which bonds may be issued.	5,182,991	2,432,991	No planned use for 2024-2025
Repair	REPAIR RESERVE	For the cost of repairs to capital improvements or equipment.	342,500	342,500	Cover Cost of unanticipated repairs.
Workers Compensation		For self-insured Workers Compensation and benefits.			
Unemployment Insurance	UNEMPLOYMENT	For reimbursement to the State Unemployment Insurance Fund.	100,000	100,000	Cover unanticipated costs.
Reserve for Tax Reduction		For the gradual use of the proceeds of the sale of school district real property.			
Mandatory Reserve for Debt Service		For proceeds from the sale of district capital assets or improvement, restricted to debt service.			
Insurance	INSURANCE	For liability, casualty, and other types of uninsured losses.	20,000	20,000	Cover deductibles and local share of claims
Property Loss + (add)		To cover property loss.			
Liability		To cover incurred liability claims.			



Tax Certiorari	TAX CERT RESERVE	For tax certiorari settlements.	96,000	100,000	Cover cost of tax certiorari claims.
Reserve for Insurance Recoveries		For unexpended proceeds of insurance recoveries at fiscal year end.			
Employee Benefit Accrued Liability	EBLAR	For accrued 'employee benefits' due to employees upon termination of service.	219,383	219,383	No planned use for 2024-2025
Retirement Contribution	ERS RESERVE	For employer retirement contributions to the State and Local Employees' Retirement System.	945,849	945,849	No planned use for 2024-2025
Reserve for Uncollected Taxes		For unpaid taxes due certain city school districts not reimbursed by their city/county until the following fiscal year.			
Single Other Reserve	TRS RESERVE	Reserve for Teachers Retirement	435,306	435,306	No Planned use for 2024-2025

\* **NYSED Reserve Guidance:**  
[http://www.p12.nysed.gov/mgtserv/accounting/docs/reserve\\_funds.pdf](http://www.p12.nysed.gov/mgtserv/accounting/docs/reserve_funds.pdf)

**OSC Reserve Guidance:** <http://osc.state.ny.us/localgov/pubs/listacctg.htm#reservecfunds>

**\*\*Provide a brief, but specific, statement of the planned use and appropriation for the reserve in SY 2024-25. Mention any capital expenditures that will need to be voted upon in the upcoming Budget Vote.**

Save	Reset	Save & Ready
------	-------	--------------

## **HERKIMER CSD - NEW YORK STATE REPORT CARD [2022 - 23]**

The New York State Report Card is an important part of the Board of Regents' effort to create educational equity and raise learning standards for all students. Knowledge gained from the report card on a school's or district's strengths and weaknesses can be used to improve instruction and services to students. The report card provides information to the public on school/district staff, students, and measures of school and district performance as required by the Every Student Succeeds Act (ESSA). Fundamentally, ESSA is about creating a set of interlocking strategies to promote educational equity by providing support to districts and schools as they work to ensure that every student succeeds. New York State is committed to ensuring that all students succeed and thrive in school no matter who they are, where they live, where they go to school, or where they come from.

### **2023-24 ACCOUNTABILITY STATUS AND SUPPORT MODEL BASED ON 2022-23 DATA**

---

Due to COVID-19 and changes to New York State accountability and federal reporting requirements, 2023-24 accountability statuses and support models were determined using a modified methodology. For more information, see [Understanding the New York State Accountability System under the Every Student Succeeds Act \(ESSA\) for 2023-24 Accountability Statuses Based on 2022-23 Results](#).

## **TARGET DISTRICT**

**MADE PROGRESS**

NA

### **SECTION 1003 SCHOOL IMPROVEMENT FUNDS (2022-23)**

The link below provides a list of all Local Education Agencies and public schools that received section 1003 school improvement funds, including the amount of funds each school received and the types of strategies implemented in each school with such funds.

[Section 1003 School Improvement Funds Data \(72.97 kilobytes\)](#)

For information on the use of Title I School Improvement funds, see:

- 2022-23 Title I SIG 1003 (Basic)
- 2022-23 Title I School Improvement Grant 1003 Coaching for Excellence Grant
- 2022-23 Title I School Improvement Grant 1003 High School Redesign Grant
- 2020-23 NYSIP-PLC Phase III
- 2022-23 Title 1 School Improvement Grant 1003 — Targeted Support for Long-term Identified Schools Grant
- 2023 Title 1 School Improvement Grant 1003 (Planning)

### **ELEMENTARY/MIDDLE STATUSES AND SUPPORT MODELS BY SUBGROUP**

Subgroup	Status And Support Model	Made Progress
All Students	Local Support and Improvement	NA
Black or African American	Targeted Support and Improvement	NA
Multiracial	Local Support and Improvement	NA
White	Local Support and Improvement	NA
Students with Disabilities	Targeted Support and Improvement	NA
Economically Disadvantaged	Local Support and Improvement	NA

### ELEMENTARY/MIDDLE INDICATOR LEVELS

Subgroup	Core Subject Performance	Weighted Average Performance	English Language Proficiency (ELP)	Chronic Absenteeism
All Students	2	2	—	1
American Indian or Alaska Native	—	—	—	—
Asian or Native Hawaiian/Other Pacific Islander	—	—	—	—
Black or African American	1	1	—	—
Hispanic or Latino	—	—	—	—
Multiracial	2	2	—	—
White	2	2	—	2
English Language Learner	—	—	—	—
Students with Disabilities	1	1	—	1
Economically Disadvantaged	2	2	—	1

## ELEMENTARY/MIDDLE CORE SUBJECT PERFORMANCE

Subgroup	Subject	Cohort	Index	Level
All Students	ELA	476	90.4	2
	Math	469	104.1	
	Combined	945	97.2	
American Indian or Alaska Native	ELA	2	—	—
	Math	2	—	
	Combined	4	—	
Asian or Native Hawaiian/Other Pacific Islander	ELA	2	—	—
	Math	2	—	
	Combined	4	—	
Black or African American	ELA	18	44.4	1
	Math	18	66.7	
	Combined	36	55.6	
Hispanic or Latino	ELA	13	53.8	—
	Math	13	46.2	
	Combined	26	—	
Multiracial	ELA	18	100	2
	Math	17	105.9	
	Combined	35	102.9	
White	ELA	423	92.9	2
	Math	417	106.8	
	Combined	840	99.8	
English Language Learner	ELA	3	—	—
	Math	3	—	
	Combined	6	—	
Students with Disabilities	ELA	95	28.9	1
	Math	92	29.3	
	Combined	187	29.1	
Economically Disadvantaged	ELA	341	80.2	2
	Math	335	95.1	
	Combined	676	87.6	

## ELEMENTARY/MIDDLE WEIGHTED AVERAGE PERFORMANCE

Subgroup	Subject	Cohort	Index	Level
All Students	ELA	476	90.4	2
	Math	469	104.1	
	Combined	945	97.2	
American Indian or Alaska Native	ELA	2	—	—
	Math	2	—	
	Combined	4	—	
Asian or Native Hawaiian/Other Pacific Islander	ELA	2	—	—
	Math	2	—	
	Combined	4	—	
Black or African American	ELA	18	44.4	1
	Math	18	66.7	
	Combined	36	55.6	
Hispanic or Latino	ELA	13	53.8	—
	Math	13	46.2	
	Combined	26	—	
Multiracial	ELA	18	100	2
	Math	17	105.9	
	Combined	35	102.9	
White	ELA	423	92.9	2
	Math	417	106.8	
	Combined	840	99.8	
English Language Learner	ELA	3	—	—
	Math	3	—	
	Combined	6	—	
Students with Disabilities	ELA	95	28.9	1
	Math	92	29.3	
	Combined	187	29.1	
Economically Disadvantaged	ELA	341	80.2	2
	Math	335	95.1	
	Combined	676	87.6	

### ELEMENTARY/MIDDLE ELP

Subgroup	Number Of ELLs	Benchmark	Progress Rate	Success Ratio	Level
All Students	6	—	—	—	—
American Indian or Alaska Native	0	—	—	—	—
Asian or Native Hawaiian/Other Pacific Islander	0	—	—	—	—
Black or African American	0	—	—	—	—
Hispanic or Latino	1	—	—	—	—
Multiracial	0	—	—	—	—
White	5	—	—	—	—
English Language Learner	6	—	—	—	—
Students with Disabilities	1	—	—	—	—
Economically Disadvantaged	4	—	—	—	—

### ELEMENTARY/MIDDLE CHRONIC ABSENTEEISM

Subgroup	Students Enrolled	Students Chronically Absent	Chronic Absenteeism Rate	Level
All Students	692	262	37.9%	1
American Indian or Alaska Native	2	—	—	—
Asian or Native Hawaiian/Other Pacific Islander	2	—	—	—
Black or African American	27	—	—	—
Hispanic or Latino	16	—	—	—
Multiracial	23	—	—	—
White	622	231	37.1%	2
English Language Learner	7	—	—	—
Students with Disabilities	129	61	47.3%	1
Economically Disadvantaged	520	235	45.2%	1

### ELEMENTARY/MIDDLE ELA PARTICIPATION RATE

Subgroup	Tested 95% In Current Year	Current Year Enrollment	Current Year Participation Rate
All Students	✓	508	97.4%
American Indian or Alaska Native	—	2	—
Asian or Native Hawaiian/Other Pacific Islander	—	2	—
Black or African American	—	20	—
Hispanic or Latino	—	13	—
Multiracial	—	20	—
White	✓	451	97.3%
English Language Learner	—	2	—
Students with Disabilities	✗	97	93.8%
Economically Disadvantaged	✓	367	97%

### ELEMENTARY/MIDDLE MATHEMATICS PARTICIPATION RATE

Subgroup	Tested 95% In Current Year	Current Year Enrollment	Current Year Participation Rate
All Students	✓	508	96.7%
American Indian or Alaska Native	—	2	—
Asian or Native Hawaiian/Other Pacific Islander	—	2	—
Black or African American	—	20	—
Hispanic or Latino	—	13	—
Multiracial	—	19	—
White	✓	452	96.5%
English Language Learner	—	2	—
Students with Disabilities	✓	94	94.7%
Economically Disadvantaged	✓	368	95.9%

### SECONDARY STATUSES AND SUPPORT MODELS BY SUBGROUP

Subgroup	Status And Support Model	Made Progress
All Students	Local Support and Improvement	NA
White	Local Support and Improvement	NA
Students with Disabilities	Local Support and Improvement	NA
Economically Disadvantaged	Local Support and Improvement	NA

## SECONDARY INDICATOR LEVELS

Subgroup	Core Subject Performance	Weighted Average Performance	Graduation Rate	English Language Proficiency (ELP)	Chronic Absenteeism
All Students	2	3	2	–	2
American Indian or Alaska Native	–	–	–	–	–
Asian or Native Hawaiian/Other Pacific Islander	–	–	–	–	–
Black or African American	–	–	–	–	–
Hispanic or Latino	–	–	–	–	–
Multiracial	–	–	–	–	–
White	2	3	2	–	2
English Language Learner	–	–	–	–	–
Students with Disabilities	1	1	2	–	2
Economically Disadvantaged	2	3	2	–	2



## SECONDARY CORE SUBJECT PERFORMANCE

Subgroup	Subject	Cohort	Index	Combined Index	Level
All Students	ELA	76	175	128.2	2
	Math	44	71.6		
	Science	62	142.7		
Asian or Native Hawaiian/Other Pacific Islander	ELA	1	—	—	—
	Math	1	—		
	Science	1	—		
Black or African American	ELA	2	—	—	—
	Math	1	—		
	Science	—	—		
Hispanic or Latino	ELA	1	—	—	—
	Math	—	—		
	Science	1	—		
Multiracial	ELA	5	90	—	—
	Math	1	—		
	Science	1	—		
White	ELA	67	182.8	133.1	2
	Math	41	74.4		
	Science	59	146.6		
Students with Disabilities	ELA	13	50	18.8	1
	Math	8	0		
	Science	8	0		
Economically Disadvantaged	ELA	37	167.6	107.3	2
	Math	21	42.9		
	Science	30	113.3		

## SECONDARY WEIGHTED AVERAGE PERFORMANCE

Subgroup	Subject	Cohort	Index	Combined Index	Level
All Students	ELA	77	172.7	110.5	3
	Math	73	43.2		
	Science	75	118		
Asian or Native Hawaiian/Other Pacific Islander	ELA	1	–	–	–
	Math	1	–		
	Science	1	–		
Black or African American	ELA	2	–	–	–
	Math	2	–		
	Science	2	–		
Hispanic or Latino	ELA	1	–	–	–
	Math	1	–		
	Science	1	–		
Multiracial	ELA	5	90	–	–
	Math	5	0		
	Science	4	–		
White	ELA	68	180.1	117.7	3
	Math	64	47.7		
	Science	67	129.1		
Students with Disabilities	ELA	13	50	18.8	1
	Math	13	0		
	Science	11	0		
Economically Disadvantaged	ELA	38	163.2	93	3
	Math	36	25		
	Science	38	89.5		

## SECONDARY GRADUATION RATE

Subgroup	Cohort	Number In Cohort	Number Graduated	Grad Rate	Average Grad Rate	Level
All Students	4-year	78	67	85.9%	84.1%	2
	5-year	97	81	83.5%		
	6-year	82	68	82.9%		
American Indian or Alaska Native	4-year	1	—	—	—	—
	5-year	0	—	—		
	6-year	0	—	—		
Asian or Native Hawaiian/Other Pacific Islander	4-year	1	—	—	—	—
	5-year	2	—	—		
	6-year	2	—	—		
Black or African American	4-year	2	—	—	—	—
	5-year	8	—	—		
	6-year	2	—	—		
Hispanic or Latino	4-year	4	—	—	—	—
	5-year	1	—	—		
	6-year	1	—	—		
Multiracial	4-year	8	—	—	—	—
	5-year	2	—	—		
	6-year	1	—	—		
White	4-year	62	56	90.3%	85.1%	2
	5-year	84	70	83.3%		
	6-year	76	62	81.6%		
English Language Learner	4-year	1	—	—	—	—
	5-year	0	—	—		
	6-year	0	—	—		
Students with Disabilities	4-year	16	11	68.8%	62.4%	2
	5-year	25	14	56%		
	6-year	14	—	—		
Economically Disadvantaged	4-year	53	45	84.9%	84.4%	2
	5-year	53	43	81.1%		
	6-year	39	34	87.2%		

## SECONDARY CHRONIC ABSENTEEISM

Subgroup	Students Enrolled	Students Chronically Absent	Chronic Absenteeism Rate	Level
All Students	326	124	38%	2
American Indian or Alaska Native	—	—	—	—
Asian or Native Hawaiian/Other Pacific Islander	5	—	—	—
Black or African American	22	—	—	—
Hispanic or Latino	6	—	—	—
Multiracial	11	—	—	—
White	282	105	37.2%	2
English Language Learner	—	—	—	—
Students with Disabilities	49	23	46.9%	2
Economically Disadvantaged	192	97	50.5%	2

## SECONDARY ELA PARTICIPATION RATE

Subgroup	Tested 95% In Current Year	Current Year 12th Grade Enrollment	Current Year Participation Rate
All Students	✓	80	98.8%
American Indian or Alaska Native	—	0	—
Asian or Native Hawaiian/Other Pacific Islander	—	1	—
Black or African American	—	3	—
Hispanic or Latino	—	1	—
Multiracial	—	5	—
White	✓	70	98.6%
English Language Learner	—	0	—
Students with Disabilities	—	14	—
Economically Disadvantaged	—	36	—

## SECONDARY MATHEMATICS PARTICIPATION RATE

Subgroup	Tested 95% In Current Year	Current Year 12th Grade Enrollment	Current Year Participation Rate
All Students	X	74	60.8%
American Indian or Alaska Native	—	0	—
Asian or Native Hawaiian/Other Pacific Islander	—	1	—
Black or African American	—	3	—
Hispanic or Latino	—	1	—
Multiracial	—	5	—
White	X	64	64.1%
English Language Learner	—	0	—
Students with Disabilities	—	13	—
Economically Disadvantaged	—	34	—

## GRADES 3-8 ENGLISH LANGUAGE ARTS RESULTS (2022-23)

The results of the 2022-23 Grades 3-8 English Language Arts represent student achievement on the new Next Generation Learning Standards. Because the tests measure different learning standards, the results are not comparable to those from prior years.

### SUMMARY RESULTS



Grade	Total	Not Tested		Tested		Level 1		Level 2		Level 3		Level 4		Proficient (Levels 3 & 4)	
	#	#	%	#	%	#	%	#	%	#	%	#	%	#	%
Grade 3	96	0	0%	96	100%	39	41%	32	33%	24	25%	1	1%	25	26%
Grade 4	76	1	1%	75	99%	32	43%	20	27%	16	21%	7	9%	23	31%
Grade 5	65	3	5%	62	95%	22	35%	25	40%	13	21%	2	3%	15	24%
Grade 6	92	5	5%	87	95%	40	46%	28	32%	17	20%	2	2%	19	22%
Grade 7	95	5	5%	90	95%	46	51%	25	28%	14	16%	5	6%	19	21%
Grade 8	89	6	7%	83	93%	19	23%	28	34%	28	34%	8	10%	36	43%
Grades 3-8	513	20	4%	493	96%	198	40%	158	32%	112	23%	25	5%	137	28%

## GRADE 3 ELA RESULTS

The results of the 2022-23 Grades 3-8 English Language Arts represent student achievement on the new Next Generation Learning Standards. Because the tests measure different learning standards, the results are not comparable to those from prior years.



Subgroup	Total	Not Tested		Tested		Level 1		Level 2		Level 3		Level 4		Proficient (Levels 3 & 4)	
	#	#	%	#	%	#	%	#	%	#	%	#	%	#	%
All Students	96	0	0%	96	100%	39	41%	32	33%	24	25%	1	1%	25	26%
Female	44	0	0%	44	100%	16	36%	12	27%	15	34%	1	2%	16	36%
Male	52	0	0%	52	100%	23	44%	20	38%	9	17%	0	0%	9	17%
General Education Students	78	0	0%	78	100%	28	36%	26	33%	23	29%	1	1%	24	31%
Students with Disabilities	18	0	0%	18	100%	11	61%	6	33%	1	6%	0	0%	1	6%
Black or African American	5	0	0%	5	100%	4	80%	1	20%	0	0%	0	0%	0	0%
Hispanic or Latino	2	0	0%	2	100%	—	—	—	—	—	—	—	—	—	—
White	86	0	0%	86	100%	33	38%	31	36%	21	24%	1	1%	22	26%
Multiracial	3	0	0%	3	100%	—	—	—	—	—	—	—	—	—	—
Small Group Total: Race & Ethnicity	5	0	0%	5	100%	2	40%	0	0%	3	60%	0	0%	3	60%
Economically Disadvantaged	70	0	0%	70	100%	30	43%	23	33%	17	24%	0	0%	17	24%
Not Economically Disadvantaged	26	0	0%	26	100%	9	35%	9	35%	7	27%	1	4%	8	31%
Non-English Language Learner	96	0	0%	96	100%	39	41%	32	33%	24	25%	1	1%	25	26%
Not in Foster Care	96	0	0%	96	100%	39	41%	32	33%	24	25%	1	1%	25	26%
Homeless	1	0	0%	1	100%	—	—	—	—	—	—	—	—	—	—
Not Homeless	95	0	0%	95	100%	—	—	—	—	—	—	—	—	—	—
Not Migrant	96	0	0%	96	100%	39	41%	32	33%	24	25%	1	1%	25	26%
Parent Not in Armed Forces	96	0	0%	96	100%	39	41%	32	33%	24	25%	1	1%	25	26%



## GRADE 4 ELA RESULTS

The results of the 2022-23 Grades 3-8 English Language Arts represent student achievement on the new Next Generation Learning Standards. Because the tests measure different learning standards, the results are not comparable to those from prior years.



Subgroup	Total	Not Tested		Tested		Level 1		Level 2		Level 3		Level 4		Proficient (Levels 3 & 4)	
	#	#	%	#	%	#	%	#	%	#	%	#	%	#	%
All Students	76	1	1%	75	99%	32	43%	20	27%	16	21%	7	9%	23	31%
Female	40	1	3%	39	98%	15	38%	11	28%	11	28%	2	5%	13	33%
Male	36	0	0%	36	100%	17	47%	9	25%	5	14%	5	14%	10	28%
General Education Students	58	0	0%	58	100%	19	33%	17	29%	16	28%	6	10%	22	38%
Students with Disabilities	18	1	6%	17	94%	13	76%	3	18%	0	0%	1	6%	1	6%
American Indian or Alaska Native	1	0	0%	1	100%	–	–	–	–	–	–	–	–	–	–
Asian or Native Hawaiian/Other Pacific Islander	1	0	0%	1	100%	–	–	–	–	–	–	–	–	–	–
Black or African American	4	0	0%	4	100%	–	–	–	–	–	–	–	–	–	–
Hispanic or Latino	1	0	0%	1	100%	–	–	–	–	–	–	–	–	–	–
White	66	1	2%	65	98%	28	43%	16	25%	16	25%	5	8%	21	32%
Multiracial	3	0	0%	3	100%	–	–	–	–	–	–	–	–	–	–
Small Group Total: Race & Ethnicity	10	0	0%	10	100%	4	40%	4	40%	0	0%	2	20%	2	20%
Economically Disadvantaged	59	0	0%	59	100%	26	44%	17	29%	11	19%	5	8%	16	27%
Not Economically Disadvantaged	17	1	6%	16	94%	6	38%	3	19%	5	31%	2	13%	7	44%
Non-English Language Learner	76	1	1%	75	99%	32	43%	20	27%	16	21%	7	9%	23	31%
Not in Foster Care	76	1	1%	75	99%	32	43%	20	27%	16	21%	7	9%	23	31%
Not Homeless	76	1	1%	75	99%	32	43%	20	27%	16	21%	7	9%	23	31%
Not Migrant	76	1	1%	75	99%	32	43%	20	27%	16	21%	7	9%	23	31%
Parent Not in Armed Forces	76	1	1%	75	99%	32	43%	20	27%	16	21%	7	9%	23	31%

## GRADE 5 ELA RESULTS

The results of the 2022-23 Grades 3-8 English Language Arts represent student achievement on the new Next Generation Learning Standards. Because the tests measure different learning standards, the results are not comparable to those from prior years.



Subgroup	Total	Not Tested		Tested		Level 1		Level 2		Level 3		Level 4		Proficient (Levels 3 & 4)	
	#	#	%	#	%	#	%	#	%	#	%	#	%	#	%
All Students	65	3	5%	62	95%	22	35%	25	40%	13	21%	2	3%	15	24%
Female	40	2	5%	38	95%	15	39%	15	39%	6	16%	2	5%	8	21%
Male	25	1	4%	24	96%	7	29%	10	42%	7	29%	0	0%	7	29%
General Education Students	54	1	2%	53	98%	15	28%	23	43%	13	25%	2	4%	15	28%
Students with Disabilities	11	2	18%	9	82%	7	78%	2	22%	0	0%	0	0%	0	0%
Black or African American	1	0	0%	1	100%	—	—	—	—	—	—	—	—	—	—
Hispanic or Latino	3	0	0%	3	100%	—	—	—	—	—	—	—	—	—	—
White	60	3	5%	57	95%	19	33%	24	42%	12	21%	2	4%	14	25%
Multiracial	1	0	0%	1	100%	—	—	—	—	—	—	—	—	—	—
Small Group Total: Race & Ethnicity	5	0	0%	5	100%	3	60%	1	20%	1	20%	0	0%	1	20%
Economically Disadvantaged	49	2	4%	47	96%	18	38%	19	40%	9	19%	1	2%	10	21%
Not Economically Disadvantaged	16	1	6%	15	94%	4	27%	6	40%	4	27%	1	7%	5	33%
English Language Learner	1	0	0%	1	100%	—	—	—	—	—	—	—	—	—	—
Non-English Language Learner	64	3	5%	61	95%	—	—	—	—	—	—	—	—	—	—
Not in Foster Care	65	3	5%	62	95%	22	35%	25	40%	13	21%	2	3%	15	24%
Homeless	1	0	0%	1	100%	—	—	—	—	—	—	—	—	—	—
Not Homeless	64	3	5%	61	95%	—	—	—	—	—	—	—	—	—	—
Not Migrant	65	3	5%	62	95%	22	35%	25	40%	13	21%	2	3%	15	24%
Parent Not in Armed Forces	65	3	5%	62	95%	22	35%	25	40%	13	21%	2	3%	15	24%

## GRADE 6 ELA RESULTS

The results of the 2022-23 Grades 3-8 English Language Arts represent student achievement on the new Next Generation Learning Standards. Because the tests measure different learning standards, the results are not comparable to those from prior years.



Subgroup	Total	Not Tested		Tested		Level 1		Level 2		Level 3		Level 4		Proficient (Levels 3 & 4)	
	#	#	%	#	%	#	%	#	%	#	%	#	%	#	%
All Students	92	5	5%	87	95%	40	46%	28	32%	17	20%	2	2%	19	22%
Female	37	2	5%	35	95%	17	49%	10	29%	8	23%	0	0%	8	23%
Male	55	3	5%	52	95%	23	44%	18	35%	9	17%	2	4%	11	21%
General Education Students	74	3	4%	71	96%	25	35%	27	38%	17	24%	2	3%	19	27%
Students with Disabilities	18	2	11%	16	89%	15	94%	1	6%	0	0%	0	0%	0	0%
American Indian or Alaska Native	1	0	0%	1	100%	–	–	–	–	–	–	–	–	–	–
Black or African American	3	0	0%	3	100%	–	–	–	–	–	–	–	–	–	–
Hispanic or Latino	1	0	0%	1	100%	–	–	–	–	–	–	–	–	–	–
White	80	4	5%	76	95%	35	46%	24	32%	15	20%	2	3%	17	22%
Multiracial	7	1	14%	6	86%	2	33%	3	50%	1	17%	0	0%	1	17%
Small Group Total: Race & Ethnicity	5	0	0%	5	100%	3	60%	1	20%	1	20%	0	0%	1	20%
Economically Disadvantaged	64	4	6%	60	94%	33	55%	19	32%	8	13%	0	0%	8	13%
Not Economically Disadvantaged	28	1	4%	27	96%	7	26%	9	33%	9	33%	2	7%	11	41%
Non-English Language Learner	92	5	5%	87	95%	40	46%	28	32%	17	20%	2	2%	19	22%
Not in Foster Care	92	5	5%	87	95%	40	46%	28	32%	17	20%	2	2%	19	22%
Homeless	1	0	0%	1	100%	–	–	–	–	–	–	–	–	–	–
Not Homeless	91	5	5%	86	95%	–	–	–	–	–	–	–	–	–	–
Not Migrant	92	5	5%	87	95%	40	46%	28	32%	17	20%	2	2%	19	22%
Parent Not in Armed Forces	92	5	5%	87	95%	40	46%	28	32%	17	20%	2	2%	19	22%

## GRADE 7 ELA RESULTS

The results of the 2022-23 Grades 3-8 English Language Arts represent student achievement on the new Next Generation Learning Standards. Because the tests measure different learning standards, the results are not comparable to those from prior years.



Subgroup	Total		Not Tested		Tested		Level 1		Level 2		Level 3		Level 4		Proficient (Levels 3 & 4)	
	#	#	%	#	%	#	%	#	%	#	%	#	%	#	%	
All Students	95	5	5%	90	95%	46	51%	25	28%	14	16%	5	6%	19	21%	
Female	44	2	5%	42	95%	21	50%	12	29%	8	19%	1	2%	9	21%	
Male	51	3	6%	48	94%	25	52%	13	27%	6	13%	4	8%	10	21%	
General Education Students	77	3	4%	74	96%	30	41%	25	34%	14	19%	5	7%	19	26%	
Students with Disabilities	18	2	11%	16	89%	16	100%	0	0%	0	0%	0	0%	0	0%	
Asian or Native Hawaiian/Other Pacific Islander	1	0	0%	1	100%	–	–	–	–	–	–	–	–	–	–	
Black or African American	6	0	0%	6	100%	5	83%	1	17%	0	0%	0	0%	0	0%	
Hispanic or Latino	5	0	0%	5	100%	–	–	–	–	–	–	–	–	–	–	
White	80	5	6%	75	94%	36	48%	22	29%	13	17%	4	5%	17	23%	
Multiracial	3	0	0%	3	100%	–	–	–	–	–	–	–	–	–	–	
Small Group Total: Race & Ethnicity	9	0	0%	9	100%	5	56%	2	22%	1	11%	1	11%	2	22%	
Economically Disadvantaged	72	4	6%	68	94%	38	56%	19	28%	7	10%	4	6%	11	16%	
Not Economically Disadvantaged	23	1	4%	22	96%	8	36%	6	27%	7	32%	1	5%	8	36%	
Non-English Language Learner	95	5	5%	90	95%	46	51%	25	28%	14	16%	5	6%	19	21%	
Not in Foster Care	95	5	5%	90	95%	46	51%	25	28%	14	16%	5	6%	19	21%	
Homeless	2	0	0%	2	100%	–	–	–	–	–	–	–	–	–	–	
Not Homeless	93	5	5%	88	95%	–	–	–	–	–	–	–	–	–	–	
Not Migrant	95	5	5%	90	95%	46	51%	25	28%	14	16%	5	6%	19	21%	
Parent Not in Armed Forces	95	5	5%	90	95%	46	51%	25	28%	14	16%	5	6%	19	21%	



## GRADE 8 ELA RESULTS

The results of the 2022-23 Grades 3-8 English Language Arts represent student achievement on the new Next Generation Learning Standards. Because the tests measure different learning standards, the results are not comparable to those from prior years.



Subgroup	Total		Not Tested		Tested		Level 1		Level 2		Level 3		Level 4		Proficient (Levels 3 & 4)	
	#	%	#	%	#	%	#	%	#	%	#	%	#	%	#	%
All Students	89		6	7%	83	93%	19	23%	28	34%	28	34%	8	10%	36	43%
Female	41		3	7%	38	93%	6	16%	11	29%	16	42%	5	13%	21	55%
Male	48		3	6%	45	94%	13	29%	17	38%	12	27%	3	7%	15	33%
General Education Students	72		2	3%	70	97%	12	17%	22	31%	28	40%	8	11%	36	51%
Students with Disabilities	17		4	24%	13	76%	7	54%	6	46%	0	0%	0	0%	0	0%
Black or African American	1		0	0%	1	100%	–	–	–	–	–	–	–	–	–	–
Hispanic or Latino	1		0	0%	1	100%	–	–	–	–	–	–	–	–	–	–
White	84		6	7%	78	93%	18	23%	25	32%	27	35%	8	10%	35	45%
Multiracial	3		0	0%	3	100%	–	–	–	–	–	–	–	–	–	–
Small Group Total: Race & Ethnicity	5		0	0%	5	100%	1	20%	3	60%	1	20%	0	0%	1	20%
Economically Disadvantaged	54		2	4%	52	96%	13	25%	20	38%	12	23%	7	13%	19	37%
Not Economically Disadvantaged	35		4	11%	31	89%	6	19%	8	26%	16	52%	1	3%	17	55%
English Language Learner	1		0	0%	1	100%	–	–	–	–	–	–	–	–	–	–
Non-English Language Learner	88		6	7%	82	93%	–	–	–	–	–	–	–	–	–	–
Not in Foster Care	89		6	7%	83	93%	19	23%	28	34%	28	34%	8	10%	36	43%
Homeless	1		0	0%	1	100%	–	–	–	–	–	–	–	–	–	–
Not Homeless	88		6	7%	82	93%	–	–	–	–	–	–	–	–	–	–
Not Migrant	89		6	7%	83	93%	19	23%	28	34%	28	34%	8	10%	36	43%
Parent Not in Armed Forces	89		6	7%	83	93%	19	23%	28	34%	28	34%	8	10%	36	43%

## GRADES 3-8 MATHEMATICS RESULTS (2022-23)

The results of the 2022-23 Grades 3-8 Mathematics Tests represent student achievement on the new Next Generation Learning Standards. Because the tests measure different learning standards, the results are not comparable to those from prior years.

### SUMMARY RESULTS



Grade	Total	Not Tested		Tested		Level 1		Level 2		Level 3		Level 4 & Above		Proficient (Levels 3 & Above)	
	#	#	%	#	%	#	%	#	%	#	%	#	%	#	%
Grade 3	97	2	2%	95	98%	19	20%	42	44%	26	27%	8	8%	34	36%
Grade 4	78	4	5%	74	95%	21	28%	26	35%	23	31%	4	5%	27	36%
Grade 5	64	2	3%	62	97%	13	21%	24	39%	22	35%	3	5%	25	40%
Grade 6	92	7	8%	85	92%	32	38%	30	35%	19	22%	4	5%	23	27%
Combined 6	92	7	8%	85	92%	32	38%	30	35%	19	22%	4	5%	23	27%
Grade 7	95	4	4%	91	96%	38	42%	30	33%	16	18%	7	8%	23	25%
Combined 7	95	4	4%	91	96%	38	42%	30	33%	16	18%	7	8%	23	25%
Grade 8	89	29	33%	60	67%	36	60%	10	17%	14	23%	0	0%	14	23%
Regents 8	—	—	—	22	25%	0	0%	0	0%	9	41%	13	59%	22	100%
Combined 8	89	7	8%	82	92%	36	44%	10	12%	23	28%	13	16%	36	44%
Grades 3-8	515	26	5%	489	95%	159	33%	162	33%	129	26%	39	8%	168	34%

See report card Glossary and Guide for criteria used to include students in this table.

## GRADE 3 MATH RESULTS

The results of the 2022-23 Grades 3-8 Mathematics Tests represent student achievement on the new Next Generation Learning Standards. Because the tests measure different learning standards, the results are not comparable to those from prior years.



Subgroup	Total	Not Tested		Tested		Level 1		Level 2		Level 3		Level 4		Proficient (Levels 3 & 4)	
	#	#	%	#	%	#	%	#	%	#	%	#	%	#	%
All Students	97	2	2%	95	98%	19	20%	42	44%	26	27%	8	8%	34	36%
Female	44	0	0%	44	100%	9	20%	19	43%	11	25%	5	11%	16	36%
Male	53	2	4%	51	96%	10	20%	23	45%	15	29%	3	6%	18	35%
General Education Students	79	0	0%	79	100%	9	11%	37	47%	25	32%	8	10%	33	42%
Students with Disabilities	18	2	11%	16	89%	10	63%	5	31%	1	6%	0	0%	1	6%
Black or African American	5	0	0%	5	100%	2	40%	3	60%	0	0%	0	0%	0	0%
Hispanic or Latino	2	0	0%	2	100%	—	—	—	—	—	—	—	—	—	—
White	87	2	2%	85	98%	17	20%	36	42%	25	29%	7	8%	32	38%
Multiracial	3	0	0%	3	100%	—	—	—	—	—	—	—	—	—	—
Small Group Total: Race & Ethnicity	5	0	0%	5	100%	0	0%	3	60%	1	20%	1	20%	2	40%
Economically Disadvantaged	71	1	1%	70	99%	15	21%	31	44%	19	27%	5	7%	24	34%
Not Economically Disadvantaged	26	1	4%	25	96%	4	16%	11	44%	7	28%	3	12%	10	40%
Non-English Language Learner	97	2	2%	95	98%	19	20%	42	44%	26	27%	8	8%	34	36%
Not in Foster Care	97	2	2%	95	98%	19	20%	42	44%	26	27%	8	8%	34	36%
Homeless	1	0	0%	1	100%	—	—	—	—	—	—	—	—	—	—
Not Homeless	96	2	2%	94	98%	—	—	—	—	—	—	—	—	—	—
Not Migrant	97	2	2%	95	98%	19	20%	42	44%	26	27%	8	8%	34	36%
Parent Not in Armed Forces	97	2	2%	95	98%	19	20%	42	44%	26	27%	8	8%	34	36%

## GRADE 4 MATH RESULTS

The results of the 2022-23 Grades 3-8 Mathematics Tests represent student achievement on the new Next Generation Learning Standards. Because the tests measure different learning standards, the results are not comparable to those from prior years.



Subgroup	Total	Not Tested		Tested		Level 1		Level 2		Level 3		Level 4		Proficient (Levels 3 & 4)	
	#	#	%	#	%	#	%	#	%	#	%	#	%	#	%
All Students	78	4	5%	74	95%	21	28%	26	35%	23	31%	4	5%	27	36%
Female	40	3	8%	37	93%	11	30%	14	38%	11	30%	1	3%	12	32%
Male	38	1	3%	37	97%	10	27%	12	32%	12	32%	3	8%	15	41%
General Education Students	60	2	3%	58	97%	9	16%	23	40%	22	38%	4	7%	26	45%
Students with Disabilities	18	2	11%	16	89%	12	75%	3	19%	1	6%	0	0%	1	6%
American Indian or Alaska Native	1	0	0%	1	100%	–	–	–	–	–	–	–	–	–	–
Asian or Native Hawaiian/Other Pacific Islander	1	0	0%	1	100%	–	–	–	–	–	–	–	–	–	–
Black or African American	4	0	0%	4	100%	–	–	–	–	–	–	–	–	–	–
Hispanic or Latino	1	0	0%	1	100%	–	–	–	–	–	–	–	–	–	–
White	68	3	4%	65	96%	19	29%	23	35%	19	29%	4	6%	23	35%
Multiracial	3	1	33%	2	67%	–	–	–	–	–	–	–	–	–	–
Small Group Total: Race & Ethnicity	10	1	10%	9	90%	2	22%	3	33%	4	44%	0	0%	4	44%
Economically Disadvantaged	61	3	5%	58	95%	16	28%	23	40%	17	29%	2	3%	19	33%
Not Economically Disadvantaged	17	1	6%	16	94%	5	31%	3	19%	6	38%	2	13%	8	50%
Non-English Language Learner	78	4	5%	74	95%	21	28%	26	35%	23	31%	4	5%	27	36%
Not in Foster Care	78	4	5%	74	95%	21	28%	26	35%	23	31%	4	5%	27	36%
Not Homeless	78	4	5%	74	95%	21	28%	26	35%	23	31%	4	5%	27	36%
Not Migrant	78	4	5%	74	95%	21	28%	26	35%	23	31%	4	5%	27	36%
Parent Not in Armed Forces	78	4	5%	74	95%	21	28%	26	35%	23	31%	4	5%	27	36%

## GRADE 5 MATH RESULTS

The results of the 2022-23 Grades 3-8 Mathematics Tests represent student achievement on the new Next Generation Learning Standards. Because the tests measure different learning standards, the results are not comparable to those from prior years.





Subgroup	Total	Not Tested		Tested		Level 1		Level 2		Level 3		Level 4		Proficient (Levels 3 & 4)	
	#	#	%	#	%	#	%	#	%	#	%	#	%	#	%
All Students	64	2	3%	62	97%	13	21%	24	39%	22	35%	3	5%	25	40%
Female	40	2	5%	38	95%	8	21%	18	47%	11	29%	1	3%	12	32%
Male	24	0	0%	24	100%	5	21%	6	25%	11	46%	2	8%	13	54%
General Education Students	54	1	2%	53	98%	7	13%	22	42%	21	40%	3	6%	24	45%
Students with Disabilities	10	1	10%	9	90%	6	67%	2	22%	1	11%	0	0%	1	11%
Black or African American	1	0	0%	1	100%	–	–	–	–	–	–	–	–	–	–
Hispanic or Latino	3	0	0%	3	100%	–	–	–	–	–	–	–	–	–	–
White	59	2	3%	57	97%	10	18%	23	40%	21	37%	3	5%	24	42%
Multiracial	1	0	0%	1	100%	–	–	–	–	–	–	–	–	–	–
Small Group Total: Race & Ethnicity	5	0	0%	5	100%	3	60%	1	20%	1	20%	0	0%	1	20%
Economically Disadvantaged	49	2	4%	47	96%	11	23%	19	40%	15	32%	2	4%	17	36%
Not Economically Disadvantaged	15	0	0%	15	100%	2	13%	5	33%	7	47%	1	7%	8	53%
English Language Learner	1	0	0%	1	100%	–	–	–	–	–	–	–	–	–	–
Non-English Language Learner	63	2	3%	61	97%	–	–	–	–	–	–	–	–	–	–
Not in Foster Care	64	2	3%	62	97%	13	21%	24	39%	22	35%	3	5%	25	40%
Homeless	1	0	0%	1	100%	–	–	–	–	–	–	–	–	–	–
Not Homeless	63	2	3%	61	97%	–	–	–	–	–	–	–	–	–	–
Not Migrant	64	2	3%	62	97%	13	21%	24	39%	22	35%	3	5%	25	40%
Parent Not in Armed Forces	64	2	3%	62	97%	13	21%	24	39%	22	35%	3	5%	25	40%

## GRADE 6 MATH RESULTS

The results of the 2022-23 Grades 3-8 Mathematics Tests represent student achievement on the new Next Generation Learning Standards. Because the tests measure different learning standards, the results are not comparable to those from prior years.



Subgroup	Total	Not Tested		Tested		Level 1		Level 2		Level 3		Level 4		Proficient (Levels 3 & 4)	
	#	#	%	#	%	#	%	#	%	#	%	#	%	#	%
All Students	92	7	8%	85	92%	32	38%	30	35%	19	22%	4	5%	23	27%
Female	37	3	8%	34	92%	11	32%	15	44%	7	21%	1	3%	8	24%
Male	55	4	7%	51	93%	21	41%	15	29%	12	24%	3	6%	15	29%
General Education Students	74	5	7%	69	93%	16	23%	30	43%	19	28%	4	6%	23	33%
Students with Disabilities	18	2	11%	16	89%	16	100%	0	0%	0	0%	0	0%	0	0%
American Indian or Alaska Native	1	0	0%	1	100%	–	–	–	–	–	–	–	–	–	–
Black or African American	3	0	0%	3	100%	–	–	–	–	–	–	–	–	–	–
Hispanic or Latino	1	0	0%	1	100%	–	–	–	–	–	–	–	–	–	–
White	80	6	8%	74	93%	26	35%	27	36%	17	23%	4	5%	21	28%
Multiracial	7	1	14%	6	86%	3	50%	2	33%	1	17%	0	0%	1	17%
Small Group Total: Race & Ethnicity	5	0	0%	5	100%	3	60%	1	20%	1	20%	0	0%	1	20%
Economically Disadvantaged	64	6	9%	58	91%	23	40%	23	40%	11	19%	1	2%	12	21%
Not Economically Disadvantaged	28	1	4%	27	96%	9	33%	7	26%	8	30%	3	11%	11	41%
Non-English Language Learner	92	7	8%	85	92%	32	38%	30	35%	19	22%	4	5%	23	27%
Not in Foster Care	92	7	8%	85	92%	32	38%	30	35%	19	22%	4	5%	23	27%
Homeless	1	0	0%	1	100%	–	–	–	–	–	–	–	–	–	–
Not Homeless	91	7	8%	84	92%	–	–	–	–	–	–	–	–	–	–
Not Migrant	92	7	8%	85	92%	32	38%	30	35%	19	22%	4	5%	23	27%
Parent Not in Armed Forces	92	7	8%	85	92%	32	38%	30	35%	19	22%	4	5%	23	27%

## GRADE 7 MATH RESULTS

The results of the 2022-23 Grades 3-8 Mathematics Tests represent student achievement on the new Next Generation Learning Standards. Because the tests measure different learning standards, the results are not comparable to those from prior years.



Subgroup	Total	Not Tested		Tested		Level 1		Level 2		Level 3		Level 4		Proficient (Levels 3 & 4)	
	#	#	%	#	%	#	%	#	%	#	%	#	%	#	%
All Students	95	4	4%	91	96%	38	42%	30	33%	16	18%	7	8%	23	25%
Female	44	2	5%	42	95%	20	48%	11	26%	10	24%	1	2%	11	26%
Male	51	2	4%	49	96%	18	37%	19	39%	6	12%	6	12%	12	24%
General Education Students	77	3	4%	74	96%	22	30%	29	39%	16	22%	7	9%	23	31%
Students with Disabilities	18	1	6%	17	94%	16	94%	1	6%	0	0%	0	0%	0	0%
Asian or Native Hawaiian/Other Pacific Islander	1	0	0%	1	100%	–	–	–	–	–	–	–	–	–	–
Black or African American	6	0	0%	6	100%	4	67%	1	17%	1	17%	0	0%	1	17%
Hispanic or Latino	5	0	0%	5	100%	–	–	–	–	–	–	–	–	–	–
White	80	4	5%	76	95%	28	37%	29	38%	14	18%	5	7%	19	25%
Multiracial	3	0	0%	3	100%	–	–	–	–	–	–	–	–	–	–
Small Group Total: Race & Ethnicity	9	0	0%	9	100%	6	67%	0	0%	1	11%	2	22%	3	33%
Economically Disadvantaged	72	3	4%	69	96%	32	46%	22	32%	11	16%	4	6%	15	22%
Not Economically Disadvantaged	23	1	4%	22	96%	6	27%	8	36%	5	23%	3	14%	8	36%
Non-English Language Learner	95	4	4%	91	96%	38	42%	30	33%	16	18%	7	8%	23	25%
Not in Foster Care	95	4	4%	91	96%	38	42%	30	33%	16	18%	7	8%	23	25%
Homeless	2	0	0%	2	100%	–	–	–	–	–	–	–	–	–	–
Not Homeless	93	4	4%	89	96%	–	–	–	–	–	–	–	–	–	–
Not Migrant	95	4	4%	91	96%	38	42%	30	33%	16	18%	7	8%	23	25%
Parent Not in Armed Forces	95	4	4%	91	96%	38	42%	30	33%	16	18%	7	8%	23	25%

## GRADE 8 MATH RESULTS

The results of the 2022-23 Grades 3-8 Mathematics Tests represent student achievement on the new Next Generation Learning Standards. Because the tests measure different learning standards, the results are not comparable to those from prior years.



Subgroup	Total	Not Tested		Tested		Level 1		Level 2		Level 3		Level 4		Proficient (Levels 3 & 4)	
	#	#	%	#	%	#	%	#	%	#	%	#	%	#	%
All Students	89	29	33%	60	67%	36	60%	10	17%	14	23%	0	0%	14	23%
Female	41	14	34%	27	66%	12	44%	6	22%	9	33%	0	0%	9	33%
Male	48	15	31%	33	69%	24	73%	4	12%	5	15%	0	0%	5	15%
General Education Students	72	25	35%	47	65%	24	51%	9	19%	14	30%	0	0%	14	30%
Students with Disabilities	17	4	24%	13	76%	12	92%	1	8%	0	0%	0	0%	0	0%
Black or African American	1	0	0%	1	100%	–	–	–	–	–	–	–	–	–	–
Hispanic or Latino	1	0	0%	1	100%	–	–	–	–	–	–	–	–	–	–
White	84	29	35%	55	65%	32	58%	10	18%	13	24%	0	0%	13	24%
Multiracial	3	0	0%	3	100%	–	–	–	–	–	–	–	–	–	–
Small Group Total: Race & Ethnicity	5	0	0%	5	100%	4	80%	0	0%	1	20%	0	0%	1	20%
Economically Disadvantaged	54	11	20%	43	80%	28	65%	8	19%	7	16%	0	0%	7	16%
Not Economically Disadvantaged	35	18	51%	17	49%	8	47%	2	12%	7	41%	0	0%	7	41%
English Language Learner	1	0	0%	1	100%	–	–	–	–	–	–	–	–	–	–
Non-English Language Learner	88	29	33%	59	67%	–	–	–	–	–	–	–	–	–	–
Not in Foster Care	89	29	33%	60	67%	36	60%	10	17%	14	23%	0	0%	14	23%
Homeless	1	0	0%	1	100%	–	–	–	–	–	–	–	–	–	–
Not Homeless	88	29	33%	59	67%	–	–	–	–	–	–	–	–	–	–
Not Migrant	89	29	33%	60	67%	36	60%	10	17%	14	23%	0	0%	14	23%
Parent Not in Armed Forces	89	29	33%	60	67%	36	60%	10	17%	14	23%	0	0%	14	23%

## GRADE 8 SCIENCE RESULTS (2022-23)

Grade 4 Science was not administered in 2022-23.

### SUMMARY RESULTS



Grade	Total	Not Tested		Tested		Level 1		Level 2		Level 3		Level 4		Proficient (Levels 3 & 4)	
	#	#	%	#	%	#	%	#	%	#	%	#	%	#	%
Grade 8	89	11	12%	78	88%	4	5%	34	44%	36	46%	4	5%	40	51%
Combined 8	89	11	12%	78	88%	4	5%	34	44%	36	46%	4	5%	40	51%

See report card Glossary and Guide for criteria used to include students in this table.



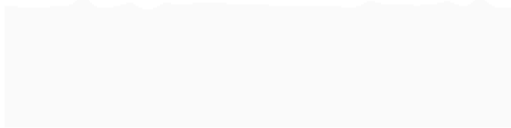
## GRADE 8 SCIENCE RESULTS



Subgroup	Total	Not Tested		Tested		Level 1		Level 2		Level 3		Level 4		Proficient (Levels 3 & 4)	
	#	#	%	#	%	#	%	#	%	#	%	#	%	#	%
All Students	89	11	12%	78	88%	4	5%	34	44%	36	46%	4	5%	40	51%
Female	41	6	15%	35	85%	2	6%	13	37%	17	49%	3	9%	20	57%
Male	48	5	10%	43	90%	2	5%	21	49%	19	44%	1	2%	20	47%
General Education Students	72	5	7%	67	93%	1	1%	28	42%	34	51%	4	6%	38	57%
Students with Disabilities	17	6	35%	11	65%	3	27%	6	55%	2	18%	0	0%	2	18%
Black or African American	1	0	0%	1	100%	—	—	—	—	—	—	—	—	—	—
Hispanic or Latino	1	0	0%	1	100%	—	—	—	—	—	—	—	—	—	—
White	84	11	13%	73	87%	4	5%	31	42%	34	47%	4	5%	38	52%
Multiracial	3	0	0%	3	100%	—	—	—	—	—	—	—	—	—	—
Small Group Total: Race & Ethnicity	5	0	0%	5	100%	0	0%	3	60%	2	40%	0	0%	2	40%
Economically Disadvantaged	54	6	11%	48	89%	3	6%	24	50%	19	40%	2	4%	21	44%
Not Economically Disadvantaged	35	5	14%	30	86%	1	3%	10	33%	17	57%	2	7%	19	63%
English Language Learner	1	0	0%	1	100%	—	—	—	—	—	—	—	—	—	—
Non-English Language Learner	88	11	13%	77	88%	—	—	—	—	—	—	—	—	—	—
Not in Foster Care	89	11	12%	78	88%	4	5%	34	44%	36	46%	4	5%	40	51%
Homeless	1	0	0%	1	100%	—	—	—	—	—	—	—	—	—	—
Not Homeless	88	11	13%	77	88%	—	—	—	—	—	—	—	—	—	—
Not Migrant	89	11	12%	78	88%	4	5%	34	44%	36	46%	4	5%	40	51%
Parent Not in Armed Forces	89	11	12%	78	88%	4	5%	34	44%	36	46%	4	5%	40	51%

## **ANNUAL REGENTS EXAMINATIONS (2022 - 23)**

Annual Regents examination results are those administered in August, January, and June of the reporting year. All Regents examinations were administered in 2022-23, except the August 2022 and January 2023 Regents examination in U.S. History and Government (Framework).



Subgroup	Tested	Level 1		Level 2		Level 3		Level 4		Level 5		Proficient (Levels 3 & Above)	
		#	%	#	%	#	%	#	%	#	%	#	%
All Students	79	7	9%	4	5%	18	23%	16	20%	34	43%	68	86%
Female	35	—	—	—	—	—	—	—	—	—	—	—	—
Male	43	6	14%	2	5%	12	28%	8	19%	15	35%	35	81%
Non-Binary	1	—	—	—	—	—	—	—	—	—	—	—	—
Small Group Total: Gender	36	1	3%	2	6%	6	17%	8	22%	19	53%	33	92%
General Education Students	67	2	3%	2	3%	16	24%	13	19%	34	51%	63	94%
Students with Disabilities	12	5	42%	2	17%	2	17%	3	25%	0	0%	5	42%
Asian or Native Hawaiian/Other Pacific Islander	2	—	—	—	—	—	—	—	—	—	—	—	—
Black or African American	8	0	0%	0	0%	2	25%	2	25%	4	50%	8	100%
Hispanic or Latino	2	—	—	—	—	—	—	—	—	—	—	—	—
White	62	5	8%	4	6%	13	21%	12	19%	28	45%	53	85%
Multiracial	5	—	—	—	—	—	—	—	—	—	—	—	—
Small Group Total: Race & Ethnicity	9	2	22%	0	0%	3	33%	2	22%	2	22%	7	78%
Economically Disadvantaged	38	3	8%	3	8%	11	29%	9	24%	12	32%	32	84%
Not Economically Disadvantaged	41	4	10%	1	2%	7	17%	7	17%	22	54%	36	88%
Non-English Language Learner	79	7	9%	4	5%	18	23%	16	20%	34	43%	68	86%
Not in Foster Care	79	7	9%	4	5%	18	23%	16	20%	34	43%	68	86%
Homeless	1	—	—	—	—	—	—	—	—	—	—	—	—
Not Homeless	78	—	—	—	—	—	—	—	—	—	—	—	—
Not Migrant	79	7	9%	4	5%	18	23%	16	20%	34	43%	68	86%
Parent Not in Armed Forces	79	7	9%	4	5%	18	23%	16	20%	34	43%	68	86%

ANNUAL REGENTS EXAMINATION IN ALGEBRA I (2022-23)



Subgroup	Tested	Level 1		Level 2		Level 3		Level 4		Level 5		Proficient (Levels 3 & Above)	
		#	%	#	%	#	%	#	%	#	%	#	%
All Students	105	13	12%	13	12%	49	47%	22	21%	8	8%	79	75%
Female	51	9	18%	5	10%	24	47%	11	22%	2	4%	37	73%
Male	54	4	7%	8	15%	25	46%	11	20%	6	11%	42	78%
General Education Students	88	7	8%	8	9%	43	49%	22	25%	8	9%	73	83%
Students with Disabilities	17	6	35%	5	29%	6	35%	0	0%	0	0%	6	35%
Asian or Native Hawaiian/Other Pacific Islander	1	--	--	--	--	--	--	--	--	--	--	--	--
Black or African American	5	--	--	--	--	--	--	--	--	--	--	--	--
Hispanic or Latino	1	--	--	--	--	--	--	--	--	--	--	--	--
White	97	12	12%	11	11%	45	46%	21	22%	8	8%	74	76%
Multiracial	1	--	--	--	--	--	--	--	--	--	--	--	--
Small Group Total: Race & Ethnicity	8	1	13%	2	25%	4	50%	1	13%	0	0%	5	63%
Economically Disadvantaged	67	11	16%	10	15%	32	48%	10	15%	4	6%	46	69%
Not Economically Disadvantaged	38	2	5%	3	8%	17	45%	12	32%	4	11%	33	87%
Non-English Language Learner	105	13	12%	13	12%	49	47%	22	21%	8	8%	79	75%
Not in Foster Care	105	13	12%	13	12%	49	47%	22	21%	8	8%	79	75%
Not Homeless	105	13	12%	13	12%	49	47%	22	21%	8	8%	79	75%
Not Migrant	105	13	12%	13	12%	49	47%	22	21%	8	8%	79	75%
Parent Not in Armed Forces	105	13	12%	13	12%	49	47%	22	21%	8	8%	79	75%

ANNUAL REGENTS EXAMINATION IN GEOMETRY (2022-23)





Subgroup	Tested	Level 1		Level 2		Level 3		Level 4		Level 5		Proficient (Levels 3 & Above)	
		#	%	#	%	#	%	#	%	#	%	#	%
All Students	51	8	16%	6	12%	29	57%	4	8%	4	8%	37	73%
Female	24	—	—	—	—	—	—	—	—	—	—	—	—
Male	26	2	8%	3	12%	16	62%	3	12%	2	8%	21	81%
Non-Binary	1	—	—	—	—	—	—	—	—	—	—	—	—
Small Group Total: Gender	25	6	24%	3	12%	13	52%	1	4%	2	8%	16	64%
General Education Students	49	—	—	—	—	—	—	—	—	—	—	—	—
Students with Disabilities	2	—	—	—	—	—	—	—	—	—	—	—	—
Asian or Native Hawaiian/Other Pacific Islander	3	—	—	—	—	—	—	—	—	—	—	—	—
Black or African American	2	—	—	—	—	—	—	—	—	—	—	—	—
Hispanic or Latino	1	—	—	—	—	—	—	—	—	—	—	—	—
White	42	8	19%	4	10%	24	57%	3	7%	3	7%	30	71%
Multiracial	3	—	—	—	—	—	—	—	—	—	—	—	—
Small Group Total: Race & Ethnicity	9	0	0%	2	22%	5	56%	1	11%	1	11%	7	78%
Economically Disadvantaged	25	5	20%	6	24%	10	40%	2	8%	2	8%	14	56%
Not Economically Disadvantaged	26	3	12%	0	0%	19	73%	2	8%	2	8%	23	88%
Non-English Language Learner	51	8	16%	6	12%	29	57%	4	8%	4	8%	37	73%
Not in Foster Care	51	8	16%	6	12%	29	57%	4	8%	4	8%	37	73%
Not Homeless	51	8	16%	6	12%	29	57%	4	8%	4	8%	37	73%
Not Migrant	51	8	16%	6	12%	29	57%	4	8%	4	8%	37	73%
Parent Not in Armed Forces	51	8	16%	6	12%	29	57%	4	8%	4	8%	37	73%

**ANNUAL REGENTS EXAMINATION IN ALGEBRA II (2022-23)**



Subgroup	Tested	Level 1		Level 2		Level 3		Level 4		Level 5		Proficient (Levels 3 & Above)	
		#	%	#	%	#	%	#	%	#	%	#	%
All Students	22	2	9%	1	5%	4	18%	11	50%	4	18%	19	86%
Female	10	2	20%	0	0%	1	10%	5	50%	2	20%	8	80%
Male	10	–	–	–	–	–	–	–	–	–	–	–	–
Non-Binary	2	–	–	–	–	–	–	–	–	–	–	–	–
Small Group Total: Gender	12	0	0%	1	8%	3	25%	6	50%	2	17%	11	92%
General Education Students	22	2	9%	1	5%	4	18%	11	50%	4	18%	19	86%
Asian or Native Hawaiian/Other Pacific Islander	2	–	–	–	–	–	–	–	–	–	–	–	–
Black or African American	1	–	–	–	–	–	–	–	–	–	–	–	–
White	19	–	–	–	–	–	–	–	–	–	–	–	–
Small Group Total: Race & Ethnicity	22	2	9%	1	5%	4	18%	11	50%	4	18%	19	86%
Economically Disadvantaged	8	1	13%	1	13%	2	25%	4	50%	0	0%	6	75%
Not Economically Disadvantaged	14	1	7%	0	0%	2	14%	7	50%	4	29%	13	93%
Non-English Language Learner	22	2	9%	1	5%	4	18%	11	50%	4	18%	19	86%
Not in Foster Care	22	2	9%	1	5%	4	18%	11	50%	4	18%	19	86%
Not Homeless	22	2	9%	1	5%	4	18%	11	50%	4	18%	19	86%
Not Migrant	22	2	9%	1	5%	4	18%	11	50%	4	18%	19	86%
Parent Not in Armed Forces	22	2	9%	1	5%	4	18%	11	50%	4	18%	19	86%

**ANNUAL REGENTS EXAMINATION IN LIVING ENVIRONMENT (2022-23)**



Subgroup	Tested	Level 1		Level 2		Level 3		Level 4		Proficient (Levels 3 & 4)	
		#	%	#	%	#	%	#	%	#	%
All Students	110	28	25%	17	15%	57	52%	8	7%	65	59%
Female	49	—	—	—	—	—	—	—	—	—	—
Male	60	13	22%	8	13%	32	53%	7	12%	39	65%
Non-Binary	1	—	—	—	—	—	—	—	—	—	—
Small Group Total: Gender	50	15	30%	9	18%	25	50%	1	2%	26	52%
General Education Students	85	10	12%	15	18%	52	61%	8	9%	60	71%
Students with Disabilities	25	18	72%	2	8%	5	20%	0	0%	5	20%
Asian or Native Hawaiian/Other Pacific Islander	2	—	—	—	—	—	—	—	—	—	—
Black or African American	9	1	11%	4	44%	3	33%	1	11%	4	44%
Hispanic or Latino	1	—	—	—	—	—	—	—	—	—	—
White	95	27	28%	10	11%	52	55%	6	6%	58	61%
Multiracial	3	—	—	—	—	—	—	—	—	—	—
Small Group Total: Race & Ethnicity	6	0	0%	3	50%	2	33%	1	17%	3	50%
Economically Disadvantaged	73	22	30%	11	15%	35	48%	5	7%	40	55%
Not Economically Disadvantaged	37	6	16%	6	16%	22	59%	3	8%	25	68%
Non-English Language Learner	110	28	25%	17	15%	57	52%	8	7%	65	59%
Not in Foster Care	110	28	25%	17	15%	57	52%	8	7%	65	59%
Not Homeless	110	28	25%	17	15%	57	52%	8	7%	65	59%
Not Migrant	110	28	25%	17	15%	57	52%	8	7%	65	59%
Parent Not in Armed Forces	110	28	25%	17	15%	57	52%	8	7%	65	59%



Subgroup	Tested	Level 1		Level 2		Level 3		Level 4		Proficient (Levels 3 & 4)	
		#	%	#	%	#	%	#	%	#	%
All Students	84	14	17%	14	17%	31	37%	25	30%	56	67%
Female	43	7	16%	9	21%	17	40%	10	23%	27	63%
Male	40	—	—	—	—	—	—	—	—	—	—
Non-Binary	1	—	—	—	—	—	—	—	—	—	—
Small Group Total: Gender	41	7	17%	5	12%	14	34%	15	37%	29	71%
General Education Students	69	8	12%	10	14%	26	38%	25	36%	51	74%
Students with Disabilities	15	6	40%	4	27%	5	33%	0	0%	5	33%
Black or African American	5	1	20%	2	40%	1	20%	1	20%	2	40%
Hispanic or Latino	2	—	—	—	—	—	—	—	—	—	—
White	72	12	17%	11	15%	26	36%	23	32%	49	68%
Multiracial	5	—	—	—	—	—	—	—	—	—	—
Small Group Total: Race & Ethnicity	7	1	14%	1	14%	4	57%	1	14%	5	71%
Economically Disadvantaged	48	14	29%	9	19%	17	35%	8	17%	25	52%
Not Economically Disadvantaged	36	0	0%	5	14%	14	39%	17	47%	31	86%
Non-English Language Learner	84	14	17%	14	17%	31	37%	25	30%	56	67%
Not in Foster Care	84	14	17%	14	17%	31	37%	25	30%	56	67%
Not Homeless	84	14	17%	14	17%	31	37%	25	30%	56	67%
Not Migrant	84	14	17%	14	17%	31	37%	25	30%	56	67%
Parent Not in Armed Forces	84	14	17%	14	17%	31	37%	25	30%	56	67%

**ANNUAL REGENTS EXAMINATION IN PHYSICAL SETTING/CHEMISTRY (2022-23)**



Subgroup	Tested	Level 1		Level 2		Level 3		Level 4		Proficient (Levels 3 & 4)	
		#	%	#	%	#	%	#	%	#	%
All Students	35	2	6%	4	11%	16	46%	13	37%	29	83%
Female	19	2	11%	1	5%	8	42%	8	42%	16	84%
Male	16	0	0%	3	19%	8	50%	5	31%	13	81%
General Education Students	35	2	6%	4	11%	16	46%	13	37%	29	83%
Asian or Native Hawaiian/Other Pacific Islander	2	–	–	–	–	–	–	–	–	–	–
Black or African American	1	–	–	–	–	–	–	–	–	–	–
White	32	–	–	–	–	–	–	–	–	–	–
Small Group Total: Race & Ethnicity	35	2	6%	4	11%	16	46%	13	37%	29	83%
Economically Disadvantaged	8	0	0%	1	13%	4	50%	3	38%	7	88%
Not Economically Disadvantaged	27	2	7%	3	11%	12	44%	10	37%	22	81%
Non-English Language Learner	35	2	6%	4	11%	16	46%	13	37%	29	83%
Not in Foster Care	35	2	6%	4	11%	16	46%	13	37%	29	83%
Not Homeless	35	2	6%	4	11%	16	46%	13	37%	29	83%
Not Migrant	35	2	6%	4	11%	16	46%	13	37%	29	83%
Parent Not in Armed Forces	35	2	6%	4	11%	16	46%	13	37%	29	83%

ANNUAL REGENTS EXAMINATION IN GLOBAL HISTORY & GEOGRAPHY II (2022-23)





Subgroup	Tested	Level 1		Level 2		Level 3		Level 4		Level 5		Proficient (Levels 3 & Above)	
		#	%	#	%	#	%	#	%	#	%	#	%
All Students	94	23	24%	15	16%	43	46%	7	7%	6	6%	56	60%
Female	49	10	20%	11	22%	24	49%	2	4%	2	4%	28	57%
Male	44	–	–	–	–	–	–	–	–	–	–	–	–
Non-Binary	1	–	–	–	–	–	–	–	–	–	–	–	–
Small Group Total: Gender	45	13	29%	4	9%	19	42%	5	11%	4	9%	28	62%
General Education Students	75	11	15%	11	15%	40	53%	7	9%	6	8%	53	71%
Students with Disabilities	19	12	63%	4	21%	3	16%	0	0%	0	0%	3	16%
Asian or Native Hawaiian/Other Pacific Islander	2	–	–	–	–	–	–	–	–	–	–	–	–
Black or African American	5	2	40%	1	20%	1	20%	0	0%	1	20%	2	40%
Hispanic or Latino	2	–	–	–	–	–	–	–	–	–	–	–	–
White	80	19	24%	12	15%	39	49%	6	8%	4	5%	49	61%
Multiracial	5	–	–	–	–	–	–	–	–	–	–	–	–
Small Group Total: Race & Ethnicity	9	2	22%	2	22%	3	33%	1	11%	1	11%	5	56%
Economically Disadvantaged	53	19	36%	8	15%	22	42%	2	4%	2	4%	26	49%
Not Economically Disadvantaged	41	4	10%	7	17%	21	51%	5	12%	4	10%	30	73%
Non-English Language Learner	94	23	24%	15	16%	43	46%	7	7%	6	6%	56	60%
Not in Foster Care	94	23	24%	15	16%	43	46%	7	7%	6	6%	56	60%
Not Homeless	94	23	24%	15	16%	43	46%	7	7%	6	6%	56	60%
Not Migrant	94	23	24%	15	16%	43	46%	7	7%	6	6%	56	60%
Parent Not in Armed Forces	94	23	24%	15	16%	43	46%	7	7%	6	6%	56	60%



Subgroup	Tested	Level 1		Level 2		Level 3		Level 4		Level 5		Proficient (Levels 3 & Above)	
		#	%	#	%	#	%	#	%	#	%	#	%
All Students	72	4	6%	9	13%	24	33%	18	25%	17	24%	59	82%
Female	31	—	—	—	—	—	—	—	—	—	—	—	—
Male	40	3	8%	7	18%	8	20%	10	25%	12	30%	30	75%
Non-Binary	1	—	—	—	—	—	—	—	—	—	—	—	—
Small Group Total: Gender	32	1	3%	2	6%	16	50%	8	25%	5	16%	29	91%
General Education Students	66	4	6%	7	11%	21	32%	18	27%	16	24%	55	83%
Students with Disabilities	6	0	0%	2	33%	3	50%	0	0%	1	17%	4	67%
Asian or Native Hawaiian/Other Pacific Islander	2	—	—	—	—	—	—	—	—	—	—	—	—
Black or African American	7	0	0%	2	29%	3	43%	1	14%	1	14%	5	71%
Hispanic or Latino	3	—	—	—	—	—	—	—	—	—	—	—	—
White	57	2	4%	6	11%	19	33%	15	26%	15	26%	49	86%
Multiracial	3	—	—	—	—	—	—	—	—	—	—	—	—
Small Group Total: Race & Ethnicity	8	2	25%	1	13%	2	25%	2	25%	1	13%	5	63%
Economically Disadvantaged	34	2	6%	7	21%	12	35%	9	26%	4	12%	25	74%
Not Economically Disadvantaged	38	2	5%	2	5%	12	32%	9	24%	13	34%	34	89%
Non-English Language Learner	72	4	6%	9	13%	24	33%	18	25%	17	24%	59	82%
Not in Foster Care	72	4	6%	9	13%	24	33%	18	25%	17	24%	59	82%
Homeless	1	—	—	—	—	—	—	—	—	—	—	—	—
Not Homeless	71	—	—	—	—	—	—	—	—	—	—	—	—
Not Migrant	72	4	6%	9	13%	24	33%	18	25%	17	24%	59	82%
Parent Not in Armed Forces	72	4	6%	9	13%	24	33%	18	25%	17	24%	59	82%

### ANNUAL REGENTS EXEMPTIONS IN U.S. HISTORY & GOVERNMENT (FRAMEWORK) (2022-23)

The Regents examination was not administered in August 2022 and January 2023. Students were exempt from taking those administrations of the Regents exam to fulfill graduation requirements if they passed the course leading to the exam.

Subgroup	Total Exempt	Exempt, Not Tested		Exempt, Tested	
		#	%	#	%
All Students	2	2	100	0	0
Female	2	2	100	0	0
General Education Students	2	2	100	0	0
Black or African American	1	1	100	0	0
White	1	1	100	0	0
Economically Disadvantaged	2	2	100	0	0
Non-English Language Learner	2	2	100	0	0
Not in Foster Care	2	2	100	0	0
Not Homeless	2	2	100	0	0
Not Migrant	2	2	100	0	0
Parent Not in Armed Forces	2	2	100	0	0

See report card Glossary and Guide for criteria used to include students in this table.

## **TOTAL COHORT REGENTS EXAMINATION RESULTS**

A High School Cohort consists of all students who first enter grade 9 anywhere or, in the case of ungraded students with disabilities, reach their seventeenth birthday in a particular school year (July 1 - June 30). The "year" used to identify the cohort is the year in which the July 1 - December 31 dates fall. Results are reported four years after these students first enter grade 9.

Due to COVID-19 and changes to New York State testing requirements, Regents examinations in June 2020 through January 2022 were canceled, with the exception of the June 2021 Regents Examinations in ELA, Algebra I, Living Environment, and Physical Setting/Earth Science. The U.S. History & Government examination from June 2022 through January 2023 was also canceled.

2019 TOTAL COHORT REGENTS IN ELA



Subgroup	Cohort	Not Tested		Tested		Level 1		Level 2		Level 3		Level 4 & Above		Proficient (Levels 3 & Above)	
		#	%	#	%	#	%	#	%	#	%	#	%	#	%
All Students	90	11	12%	79	88%	4	4%	7	8%	17	19%	51	57%	68	76%
Female	46	2	4%	44	96%	0	0%	5	11%	8	17%	31	67%	39	85%
Male	43	8	—	35	—	—	—	—	—	—	—	—	—	—	—
Non-Binary	1	1	—	0	—	—	—	—	—	—	—	—	—	—	—
Small Group Total: Gender	44	9	20%	35	80%	4	9%	2	5%	9	20%	20	45%	29	66%
General Education Students	72	7	10%	65	90%	1	1%	0	0%	15	21%	49	68%	64	89%
Students with Disabilities	18	4	22%	14	78%	3	17%	7	39%	2	11%	2	11%	4	22%
Asian or Native Hawaiian/Other Pacific Islander	1	0	—	1	—	—	—	—	—	—	—	—	—	—	—
Black or African American	4	1	—	3	—	—	—	—	—	—	—	—	—	—	—
Hispanic or Latino	2	1	—	1	—	—	—	—	—	—	—	—	—	—	—
White	78	9	12%	69	88%	2	3%	6	8%	14	18%	47	60%	61	78%
Multiracial	5	0	0%	5	100%	2	40%	0	0%	2	40%	1	20%	3	60%
Small Group Total: Race & Ethnicity	7	2	29%	5	71%	0	0%	1	14%	1	14%	3	43%	4	57%
Economically Disadvantaged	46	8	17%	38	83%	1	2%	3	7%	12	26%	22	48%	34	74%
Not Economically Disadvantaged	44	3	7%	41	93%	3	7%	4	9%	5	11%	29	66%	34	77%
Non-English Language Learner	90	11	12%	79	88%	4	4%	7	8%	17	19%	51	57%	68	76%
Not in Foster Care	90	11	12%	79	88%	4	4%	7	8%	17	19%	51	57%	68	76%
Not Homeless	90	11	12%	79	88%	4	4%	7	8%	17	19%	51	57%	68	76%
Not Migrant	90	11	12%	79	88%	4	4%	7	8%	17	19%	51	57%	68	76%
Parent Not in Armed Forces	90	11	12%	79	88%	4	4%	7	8%	17	19%	51	57%	68	76%

## 2019 TOTAL COHORT REGENTS IN MATH





Subgroup	Cohort	Not Tested		Tested		Level 1		Level 2		Level 3		Level 4 & Above		Proficient (Levels 3 & Above)	
		#	%	#	%	#	%	#	%	#	%	#	%	#	%
All Students	90	42	47%	48	53%	13	14%	12	13%	14	16%	9	10%	23	26%
Female	46	19	41%	27	59%	6	13%	7	15%	6	13%	8	17%	14	30%
Male	43	22	—	21	—	—	—	—	—	—	—	—	—	—	—
Non-Binary	1	1	—	0	—	—	—	—	—	—	—	—	—	—	—
Small Group Total: Gender	44	23	52%	21	48%	7	16%	5	11%	8	18%	1	2%	9	20%
General Education Students	72	33	46%	39	54%	7	10%	9	13%	14	19%	9	13%	23	32%
Students with Disabilities	18	9	50%	9	50%	6	33%	3	17%	0	0%	0	0%	0	0%
Asian or Native Hawaiian/Other Pacific Islander	1	0	—	1	—	—	—	—	—	—	—	—	—	—	—
Black or African American	4	3	—	1	—	—	—	—	—	—	—	—	—	—	—
Hispanic or Latino	2	1	—	1	—	—	—	—	—	—	—	—	—	—	—
White	78	34	44%	44	56%	11	14%	11	14%	13	17%	9	12%	22	28%
Multiracial	5	4	80%	1	20%	1	20%	0	0%	0	0%	0	0%	0	0%
Small Group Total: Race & Ethnicity	7	4	57%	3	43%	1	14%	1	14%	1	14%	0	0%	1	14%
Economically Disadvantaged	46	22	48%	24	52%	10	22%	7	15%	5	11%	2	4%	7	15%
Not Economically Disadvantaged	44	20	45%	24	55%	3	7%	5	11%	9	20%	7	16%	16	36%
Non-English Language Learner	90	42	47%	48	53%	13	14%	12	13%	14	16%	9	10%	23	26%
Not in Foster Care	90	42	47%	48	53%	13	14%	12	13%	14	16%	9	10%	23	26%
Not Homeless	90	42	47%	48	53%	13	14%	12	13%	14	16%	9	10%	23	26%
Not Migrant	90	42	47%	48	53%	13	14%	12	13%	14	16%	9	10%	23	26%
Parent Not in Armed Forces	90	42	47%	48	53%	13	14%	12	13%	14	16%	9	10%	23	26%

### 2019 TOTAL COHORT EXEMPTIONS IN MATH

The Regents examination was not administered in August 2022 and January 2023. Students were exempt from taking those administrations of the Regents exam to fulfill graduation requirements if they passed the course leading to the exam.

Subgroup	Total Exempt	Exempt, Not Tested		Exempt, Tested	
		#	%	#	%
All Students	56	29	52	27	48
Female	30	13	43	17	57
Male	25	15	60	10	40
Non-Binary	1	1	100	0	0
General Education Students	55	28	51	27	49
Students with Disabilities	1	1	100	0	0
Asian or Native Hawaiian/Other Pacific Islander	1	0	0	1	100
Black or African American	2	1	50	1	50
Hispanic or Latino	1	1	100	0	0
White	50	25	50	25	50
Multiracial	2	2	100	0	0
Economically Disadvantaged	26	17	65	9	35
Not Economically Disadvantaged	30	12	40	18	60
Non-English Language Learner	56	29	52	27	48
Not in Foster Care	56	29	52	27	48
Not Homeless	56	29	52	27	48
Not Migrant	56	29	52	27	48
Parent Not in Armed Forces	56	29	52	27	48

See report card Glossary and Guide for criteria used to include students in this table.

## 2019 TOTAL COHORT REGENTS IN SCIENCE



Subgroup	Cohort	Not Tested		Tested		Level 1		Level 2		Level 3		Level 4		Proficient (Levels 3 & 4)	
		#	%	#	%	#	%	#	%	#	%	#	%	#	%
All Students	90	23	26%	67	74%	20	22%	11	12%	21	23%	15	17%	36	40%
Female	46	9	20%	37	80%	11	24%	5	11%	10	22%	11	24%	21	46%
Male	43	14	—	29	—	—	—	—	—	—	—	—	—	—	—
Non-Binary	1	0	—	1	—	—	—	—	—	—	—	—	—	—	—
Small Group Total: Gender	44	14	32%	30	68%	9	20%	6	14%	11	25%	4	9%	15	34%
General Education Students	72	14	19%	58	81%	11	15%	11	15%	21	29%	15	21%	36	50%
Students with Disabilities	18	9	50%	9	50%	9	50%	0	0%	0	0%	0	0%	0	0%
Asian or Native Hawaiian/Other Pacific Islander	1	0	—	1	—	—	—	—	—	—	—	—	—	—	—
Black or African American	4	4	—	0	—	—	—	—	—	—	—	—	—	—	—
Hispanic or Latino	2	1	—	1	—	—	—	—	—	—	—	—	—	—	—
White	78	14	18%	64	82%	18	23%	11	14%	20	26%	15	19%	35	45%
Multiracial	5	4	80%	1	20%	1	20%	0	0%	0	0%	0	0%	0	0%
Small Group Total: Race & Ethnicity	7	5	71%	2	29%	1	14%	0	0%	1	14%	0	0%	1	14%
Economically Disadvantaged	46	12	26%	34	74%	13	28%	8	17%	9	20%	4	9%	13	28%
Not Economically Disadvantaged	44	11	25%	33	75%	7	16%	3	7%	12	27%	11	25%	23	52%
Non-English Language Learner	90	23	26%	67	74%	20	22%	11	12%	21	23%	15	17%	36	40%
Not in Foster Care	90	23	26%	67	74%	20	22%	11	12%	21	23%	15	17%	36	40%
Not Homeless	90	23	26%	67	74%	20	22%	11	12%	21	23%	15	17%	36	40%
Not Migrant	90	23	26%	67	74%	20	22%	11	12%	21	23%	15	17%	36	40%
Parent Not in Armed Forces	90	23	26%	67	74%	20	22%	11	12%	21	23%	15	17%	36	40%

### 2019 TOTAL COHORT EXEMPTIONS IN SCIENCE

The Regents examination was not administered in August 2022 and January 2023. Students were exempt from taking those administrations of the Regents exam to fulfill graduation requirements if they passed the course leading to the exam.

Subgroup	Total Exempt	Exempt, Not Tested		Exempt, Tested	
		#	%	#	%
All Students	79	13	16	66	84
Female	40	4	10	36	90
Male	38	9	24	29	76
Non-Binary	1	0	0	1	100
General Education Students	65	8	12	57	88
Students with Disabilities	14	5	36	9	64
Asian or Native Hawaiian/Other Pacific Islander	1	0	0	1	100
Black or African American	2	2	100	0	0
Hispanic or Latino	2	1	50	1	50
White	70	7	10	63	90
Multiracial	4	3	75	1	25
Economically Disadvantaged	41	8	20	33	80
Not Economically Disadvantaged	38	5	13	33	87
Non-English Language Learner	79	13	16	66	84
Not in Foster Care	79	13	16	66	84
Not Homeless	79	13	16	66	84
Not Migrant	79	13	16	66	84
Parent Not in Armed Forces	79	13	16	66	84

See report card Glossary and Guide for criteria used to include students in this table.

2019 TOTAL COHORT REGENTS IN GLOBAL HISTORY & GEOGRAPHY



Subgroup	Cohort	Not Tested		Tested		Level 1		Level 2		Level 3		Level 4 & Above		Proficient (Levels 3 & Above)	
		#	%	#	%	#	%	#	%	#	%	#	%	#	%
All Students	90	89	99%	1	1%	0	0%	0	0%	1	1%	0	0%	1	1%
Female	46	46	100%	0	0%	0	0%	0	0%	0	0%	0	0%	0	0%
Male	43	42	—	1	—	—	—	—	—	—	—	—	—	—	—
Non-Binary	1	1	—	0	—	—	—	—	—	—	—	—	—	—	—
Small Group Total: Gender	44	43	98%	1	2%	0	0%	0	0%	1	2%	0	0%	1	2%
General Education Students	72	71	99%	1	1%	0	0%	0	0%	1	1%	0	0%	1	1%
Students with Disabilities	18	18	100%	0	0%	0	0%	0	0%	0	0%	0	0%	0	0%
Asian or Native Hawaiian/Other Pacific Islander	1	1	—	0	—	—	—	—	—	—	—	—	—	—	—
Black or African American	4	4	—	0	—	—	—	—	—	—	—	—	—	—	—
Hispanic or Latino	2	2	—	0	—	—	—	—	—	—	—	—	—	—	—
White	78	77	99%	1	1%	0	0%	0	0%	1	1%	0	0%	1	1%
Multiracial	5	5	100%	0	0%	0	0%	0	0%	0	0%	0	0%	0	0%
Small Group Total: Race & Ethnicity	7	7	100%	0	0%	0	0%	0	0%	0	0%	0	0%	0	0%
Economically Disadvantaged	46	45	98%	1	2%	0	0%	0	0%	1	2%	0	0%	1	2%
Not Economically Disadvantaged	44	44	100%	0	0%	0	0%	0	0%	0	0%	0	0%	0	0%
Non-English Language Learner	90	89	99%	1	1%	0	0%	0	0%	1	1%	0	0%	1	1%
Not in Foster Care	90	89	99%	1	1%	0	0%	0	0%	1	1%	0	0%	1	1%
Not Homeless	90	89	99%	1	1%	0	0%	0	0%	1	1%	0	0%	1	1%
Not Migrant	90	89	99%	1	1%	0	0%	0	0%	1	1%	0	0%	1	1%
Parent Not in Armed Forces	90	89	99%	1	1%	0	0%	0	0%	1	1%	0	0%	1	1%

## 2019 TOTAL COHORT EXEMPTIONS IN GLOBAL HISTORY & GEOGRAPHY

The Regents examination was not administered in August 2022 and January 2023. Students were exempt from taking those administrations of the Regents exam to fulfill graduation requirements if they passed the course leading to the exam.

Subgroup	Total Exempt	Exempt, Not Tested		Exempt, Tested	
		#	%	#	%
All Students	75	74	99	1	1
Female	41	41	100	0	0
Male	33	32	97	1	3
Non-Binary	1	1	100	0	0
General Education Students	63	62	98	1	2
Students with Disabilities	12	12	100	0	0
Asian or Native Hawaiian/Other Pacific Islander	1	1	100	0	0
Black or African American	3	3	100	0	0
Hispanic or Latino	1	1	100	0	0
White	68	67	99	1	1
Multiracial	2	2	100	0	0
Economically Disadvantaged	38	37	97	1	3
Not Economically Disadvantaged	37	37	100	0	0
Non-English Language Learner	75	74	99	1	1
Not in Foster Care	75	74	99	1	1
Not Homeless	75	74	99	1	1
Not Migrant	75	74	99	1	1
Parent Not in Armed Forces	75	74	99	1	1

See report card Glossary and Guide for criteria used to include students in this table.



2019 TOTAL COHORT REGENTS IN U.S. HISTORY & GOVERNMENT



Subgroup	Cohort	Not Tested		Tested		Level 1		Level 2		Level 3		Level 4 & Above		Proficient (Levels 3 & Above)	
		#	%	#	%	#	%	#	%	#	%	#	%	#	%
All Students	90	83	92%	7	8%	1	1%	0	0%	6	7%	0	0%	6	7%
Female	46	44	96%	2	4%	0	0%	0	0%	2	4%	0	0%	2	4%
Male	43	38	—	5	—	—	—	—	—	—	—	—	—	—	—
Non-Binary	1	1	—	0	—	—	—	—	—	—	—	—	—	—	—
Small Group Total: Gender	44	39	89%	5	11%	1	2%	0	0%	4	9%	0	0%	4	9%
General Education Students	72	65	90%	7	10%	1	1%	0	0%	6	8%	0	0%	6	8%
Students with Disabilities	18	18	100%	0	0%	0	0%	0	0%	0	0%	0	0%	0	0%
Asian or Native Hawaiian/Other Pacific Islander	1	1	—	0	—	—	—	—	—	—	—	—	—	—	—
Black or African American	4	4	—	0	—	—	—	—	—	—	—	—	—	—	—
Hispanic or Latino	2	2	—	0	—	—	—	—	—	—	—	—	—	—	—
White	78	72	92%	6	8%	0	0%	0	0%	6	8%	0	0%	6	8%
Multiracial	5	4	80%	1	20%	1	20%	0	0%	0	0%	0	0%	0	0%
Small Group Total: Race & Ethnicity	7	7	100%	0	0%	0	0%	0	0%	0	0%	0	0%	0	0%
Economically Disadvantaged	46	44	96%	2	4%	1	2%	0	0%	1	2%	0	0%	1	2%
Not Economically Disadvantaged	44	39	89%	5	11%	0	0%	0	0%	5	11%	0	0%	5	11%
Non-English Language Learner	90	83	92%	7	8%	1	1%	0	0%	6	7%	0	0%	6	7%
Not in Foster Care	90	83	92%	7	8%	1	1%	0	0%	6	7%	0	0%	6	7%
Not Homeless	90	83	92%	7	8%	1	1%	0	0%	6	7%	0	0%	6	7%
Not Migrant	90	83	92%	7	8%	1	1%	0	0%	6	7%	0	0%	6	7%
Parent Not in Armed Forces	90	83	92%	7	8%	1	1%	0	0%	6	7%	0	0%	6	7%

### 2019 TOTAL COHORT EXEMPTIONS IN U.S. HISTORY & GOVERNMENT

The Regents examination was not administered in August 2022 and January 2023. Students were exempt from taking those administrations of the Regents exam to fulfill graduation requirements if they passed the course leading to the exam.



## NEW YORK STATE ALTERNATE ASSESSMENT (2022-23)

New York State Alternate Assessments (NYSAA) are administered to ungraded students with severe cognitive disabilities whose ages are equivalent to graded students in grades 3 through 8 and high school level.

Grade/Subject	Total	Not Tested		Tested		Level 1		Level 2		Level 3		Level 4		Proficient (Levels 3 & 4)	
	#	#	%	#	%	#	%	#	%	#	%	#	%	#	%
Grade 6 ELA	1	1	100%	0	0%	0	0%	0	0%	0	0%	0	0%	0	0%
Grade 6 Math	1	1	100%	0	0%	0	0%	0	0%	0	0%	0	0%	0	0%
Grade 8 ELA	3	1	33%	2	67%	–	–	–	–	–	–	–	–	–	–
Grade 8 Math	3	1	33%	2	67%	–	–	–	–	–	–	–	–	–	–
Grade 8 Science	3	1	33%	2	67%	–	–	–	–	–	–	–	–	–	–
Secondary-Level ELA	11	10	91%	1	9%	–	–	–	–	–	–	–	–	–	–
Secondary-Level Math	11	10	91%	1	9%	–	–	–	–	–	–	–	–	–	–
Secondary-Level Science	11	10	91%	1	9%	–	–	–	–	–	–	–	–	–	–

See report card Glossary and Guide for criteria used to include students in this table.

## NATIONAL ASSESSMENT OF EDUCATION PROGRESS (NAEP) RESULTS (2022)

National Assessment of Education Progress (NAEP) are reported for statewide (New York State) and national results only. District- and school-level results are not reported for NAEP.

### NEW YORK STATE NAEP GRADE 4

SUBGROUP	READING				MATH			
	BELOW BASIC	BASIC	PROFICIENT	ADVANCED	BELOW BASIC	BASIC	PROFICIENT	ADVANCED
All Students	42%	29%	21%	8%	34%	38%	23%	5%
Students with Disabilities	75%	19%	6%	1%	66%	24%	9%	1%
American Indian/Alaska Native	*	*	*	*	*	*	*	*
Asian/Pacific Islander	25%	28%	28%	20%	11%	35%	39%	16%
Black	59%	26%	13%	2%	50%	36%	13%	1%
Hispanic	51%	29%	17%	4%	47%	38%	13%	2%
White	32%	30%	26%	11%	23%	39%	32%	7%
Two or more races	*	*	*	*	41%	35%	20%	3%
English Language Learners	69%	22%	8%	1%	63%	29%	7%	1%
Economically Disadvantaged	53%	27%	16%	4%	44%	38%	15%	3%

## NEW YORK STATE NAEP GRADE 8

SUBGROUP	READING				MATH			
	BELOW BASIC	BASIC	PROFICIENT	ADVANCED	BELOW BASIC	BASIC	PROFICIENT	ADVANCED
All Students	30%	38%	28%	5%	40%	32%	19%	9%
Students with Disabilities	61%	28%	9%	1%	71%	21%	7%	1%
American Indian/Alaska Native	*	*	*	*	*	*	*	*
Asian/Pacific Islander	16%	34%	41%	8%	18%	23%	35%	24%
Black	44%	40%	15%	1%	64%	26%	8%	1%
Hispanic	42%	39%	17%	2%	53%	33%	12%	3%
White	19%	37%	36%	8%	27%	36%	25%	12%
Two or more races	*	*	*	*	*	*	*	*
English Language Learners	83%	17%	0%	0%	85%	13%	1%	0%
Economically Disadvantaged	40%	39%	19%	2%	52%	30%	13%	5%

\*There are not sufficient data for this subgroup.

## NEW YORK STATE NAEP PARTICIPATION RATES

	Grade 4 Participation Rate		Grade 8 Participation Rate	
	READING	MATH	READING	MATH
All Students	87%	86%	82%	81%
Students with Disabilities	92%	96%	91%	93%
English Language Learners	92%	95%	92%	94%

### NATIONAL NAEP GRADE 4

SUBGROUP	READING				MATH			
	BELOW BASIC	BASIC	PROFICIENT	ADVANCED	BELOW BASIC	BASIC	PROFICIENT	ADVANCED
All Students	39%	29%	24%	8%	26%	39%	28%	7%
Students with Disabilities	71%	19%	9%	2%	54%	31%	13%	2%
American Indian/Alaska Native	57%	25%	15%	3%	42%	40%	16%	3%
Asian/Pacific Islander	20%	25%	33%	23%	11%	28%	38%	24%
Black	57%	27%	14%	2%	46%	39%	13%	1%
Hispanic	51%	28%	17%	4%	37%	42%	19%	2%
White	28%	31%	30%	11%	15%	38%	37%	10%
Two or more races	33%	31%	27%	9%	23%	39%	29%	9%
English Language Learners	67%	23%	9%	1%	48%	38%	12%	1%
Economically Disadvantaged	52%	28%	16%	3%	38%	41%	18%	2%

### NATIONAL NAEP GRADE 8

SUBGROUP	READING				MATH			
	BELOW BASIC	BASIC	PROFICIENT	ADVANCED	BELOW BASIC	BASIC	PROFICIENT	ADVANCED
All Students	32%	39%	26%	3%	40%	35%	19%	7%
Students with Disabilities	65%	26%	8%	1%	73%	20%	6%	1%
American Indian/Alaska Native	45%	37%	17%	1%	56%	33%	10%	1%
Asian/Pacific Islander	15%	30%	43%	12%	16%	28%	30%	26%
Black	48%	37%	14%	1%	62%	29%	8%	1%
Hispanic	40%	40%	19%	1%	52%	34%	12%	2%
White	23%	40%	32%	4%	28%	38%	26%	9%
Two or more races	29%	38%	28%	5%	37%	36%	21%	6%
English Language Learners	69%	26%	5%	0%	76%	20%	4%	0%
Economically Disadvantaged	42%	39%	17%	1%	54%	33%	11%	2%

\*There are not sufficient data for this subgroup.

## NATIONAL NAEP PARTICIPATION RATES

	Grade 4 Participation Rate		Grade 8 Participation Rate	
	READING	MATH	READING	MATH
All Students	92%	92%	89%	89%
Students with Disabilities	91%	91%	91%	92%
English Language Learners	95%	95%	93%	94%

## EXPENDITURES PER PUPIL (2022-23)

	Pupil Count	Federal		State & Local		Total	
		Expenditures	Expenditures Per Pupil	Expenditures	Expenditures Per Pupil	Expenditures	Expenditures Per Pupil
This District	1,095	\$2,880,820	\$2,631	\$18,105,589	\$16,535	\$20,986,409	\$19,166
Statewide	2,459,753	\$6,118,470,652	\$2,487	\$59,943,289,717	\$24,370	\$66,061,760,369	\$26,857

## STAFF QUALIFICATIONS (2022-23)

### INEXPERIENCED TEACHERS AND PRINCIPALS

	TEACHERS			PRINCIPALS		
	Total	# Inexperienced	% Inexperienced	Total	# Inexperienced	% Inexperienced
THIS DISTRICT	87	18	21%	3	0	0%
STATEWIDE	214,159	51,376	24%	4,438	1,059	24%
STATEWIDE HIGH-POVERTY SCHOOLS	48,028	18,375	38%	948	170	18%
STATEWIDE LOW-POVERTY SCHOOLS	62,734	8,756	14%	1,202	279	23%





Subgroup	Total Enrolled	GRAD RATE		REGENTS WITH ADVANCED DESIGNATION		REGENTS DIPLOMA		LOCAL DIPLOMA		NON DIPLOMA CRED		STILL ENROLLED		GED TRANSFER		DROPOUT	
		#	%	#	%	#	%	#	%	#	%	#	%	#	%	#	%
Not in Foster Care	90	72	80%	22	24%	48	53%	2	2%	1	1%	4	4%	0	0%	13	14%
Homeless	0	0	0%	0	0%	0	0%	0	0%	0	0%	0	0%	0	0%	0	0%
Not Homeless	90	72	80%	22	24%	48	53%	2	2%	1	1%	4	4%	0	0%	13	14%
Migrant	0	0	0%	0	0%	0	0%	0	0%	0	0%	0	0%	0	0%	0	0%
Not Migrant	90	72	80%	22	24%	48	53%	2	2%	1	1%	4	4%	0	0%	13	14%
Parent in Armed Forces	0	0	0%	0	0%	0	0%	0	0%	0	0%	0	0%	0	0%	0	0%
Parent Not in Armed Forces	90	72	80%	22	24%	48	53%	2	2%	1	1%	4	4%	0	0%	13	14%

### CIVIL RIGHTS DATA COLLECTION (CRDC) (2020-21)

Civil Right Data Collection (CRDC) data are reported to the United States Department of Education by districts and include data on measures of school quality, climate, and safety as well as enrollment in preschool programs and accelerated coursework to earn postsecondary credit. For more information, visit the Civil Rights Data Collection, Office for Civil Rights.

CRDC Data (18.04 megabytes)

CRDC Glossary and Guide

© COPYRIGHT NEW YORK STATE EDUCATION DEPARTMENT, ALL RIGHTS RESERVED.

THIS DOCUMENT WAS CREATED ON: APRIL 29, 2024, 10:52 AM EST

Equalized Total Assessed Value 765,541,419

School District - 213001 Herkimer Central

Exemption Code	Exemption Name	Statutory Authority	Number of Exemptions	Total Equalized Value of Exemptions	Percent of Value Exempted
12100	NYS - GENERALLY	RPTL 404(1)	24	5,067,502	0.66
13100	CO - GENERALLY	RPTL 406(1)	23	71,790,149	9.38
13110	CO - CEMETERY LAND	RPTL 446	1	11,471	0.00
13500	TOWN - GENERALLY	RPTL 406(1)	8	2,396,324	0.31
13650	VG - GENERALLY	RPTL 406(1)	41	14,817,355	1.94
13660	VG - CEMETERY LAND	RPTL 446	3	364,853	0.05
13800	SCHOOL DISTRICT	RPTL 408	5	6,117,058	0.80
13850	BOCES	RPTL 408	3	13,224,853	1.73
14100	USA - GENERALLY	RPTL 400(1)	2	1,281,765	0.17
18020	MUNICIPAL INDUSTRIAL DEV AGENC	RPTL 412-a	6	21,719,412	2.84
18060	URBAN REN: OWNER-MUN U RAGENC	GEN MUNY 555 & 560	1	4,573,235	0.60
21600	RES OF CLERGY - RELIG CORP OWN	RPTL 462	6	1,021,324	0.13
25110	NONPROF CORP - RELIG(CONST PRO	RPTL 420-a	22	27,291,173	3.56
25120	NONPROF CORP - EDUC(CONST PRC	RPTL 420-a	9	33,567,354	4.38
25130	NONPROF CORP - CHAR (CONST PRO	RPTL 420-a	3	326,471	0.04
25210	NONPROF CORP - HOSPITAL	RPTL 420-a	3	1,558,235	0.20
25230	NONPROF CORP - MORAL/MENTAL IM	RPTL 420-a	27	14,650,149	1.91
25300	NONPROF CORP - SPECIFIED USES	RPTL 420-b	9	33,332,896	4.35
25400	FRATERNAL ORGANIZATION	RPTL 428	1	1,046,765	0.14
25900	SYSTEM CODE	STATUTORY AUTH NOT DEFINED	1	95,588	0.01
26100	VETERANS ORGANIZATION	RPTL 452	2	1,215,588	0.16
26400	INC VOLUNTEER FIRE CO OR DEPT	RPTL 464(2)	2	841,176	0.11
27350	PRIVATELY OWNED CEMETERY LAND	RPTL 446	4	381,765	0.05
29700	PROP WITHDRAWN FROM FORECLOS	RPTL 1138	18	2,638,530	0.34
41400	CLERGY	RPTL 460	4	8,824	0.00
41700	AGRICULTURAL BUILDING	RPTL 483	3	146,615	0.02
41720	AGRICULTURAL DISTRICT	AG-MKTS L 305	19	378,970	0.05
41730	AGRIC LAND-INDIV NOT IN AG DIS	AG MKTS L 306	18	188,876	0.02
41800	PERSONS AGE 65 OR OVER	RPTL 467	14	560,145	0.07
41834	ENHANCED STAR	RPTL 425	606	51,290,989	6.70
41854	BASIC STAR 1999-2000	RPTL 425	794	27,619,097	3.61
42100	SILOS, MANURE STORAGE TANKS,	RPTL 483-a	1	11,404	0.00
47100	Mass Telecomm Ceiling	RPTL S499-qqqq	5	118,538	0.02

Equalized Total Assessed Value 765,541,419

School District - 213001 Herkimer Central

Exemption Code	Exemption Name	Statutory Authority	Number of Exemptions	Total Equalized Value of Exemptions	Percent of Value Exempted
47460	FOREST LAND CERTD AFTER 8/74	RPTL 480-a	1	106,879	0.01
49506	SOLAR OR WIND ENERGY SYSTEM	RPTL 487	2	313,236	0.04
50000	SYSTEM CODE	STATUTORY AUTH NOT DEFINED	3	38,370	0.01
<b>Total Exemptions Exclusive of System Exemptions:</b>				<b>340,074,564</b>	<b>44.42</b>
<b>Total System Exemptions:</b>				<b>38,370</b>	<b>0.01</b>
<b>Totals:</b>				<b>340,112,934</b>	<b>44.43</b>

Values have been equalized using the Uniform Percentage of Value. The Exempt amounts do not take into consideration, payments in lieu of taxes or other payments for municipal services.

Amount, if any, attributable to payments in lieu of taxes: \_\_\_\_\_